

Mercedes Benz W124 Convertible Rear Side Window Covers Installation Guide

Purchase Includes:

- Rear Window Cover

Additional Tools Needed for the installation:

- Glue: we use 3M AUTO Advanced SUPER WEATHERSTRIP ADHESIVE or similar products
- Small plier or snipper

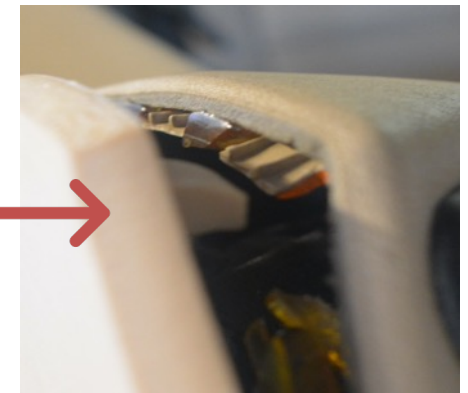


TOP CLASSIC CARS LLC & TOP CLASSIC PARTS LLC



This is what the installation spot looks like once the old defect part is removed. You see a lot of broken tiny plastic clamps and a lot of glue!

The first step is to remove the glue and the plastic clamps in the marked top corner to ensure that our new clip fits in there



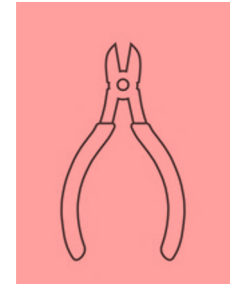
TOP CLASSIC CARS LLC & TOP CLASSIC PARTS LLC



The marked spot should look similar to this once the glue is removed



We used a
small cutting
plier to remove
the glue

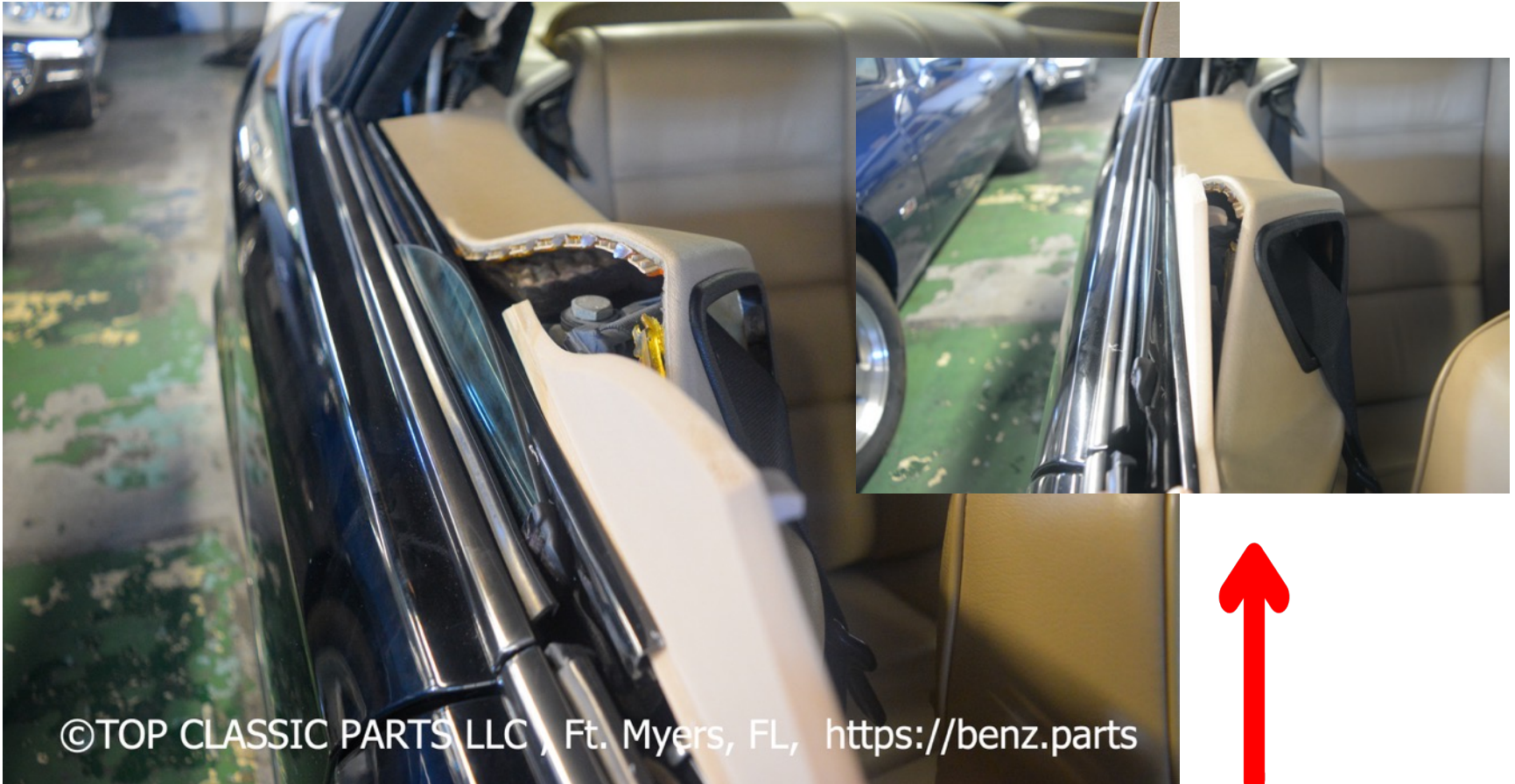


TOP CLASSIC CARS LLC & TOP CLASSIC PARTS LLC



The bottom part of our new aftermarket cover has to slide under the rail → check next slide

TOP CLASSIC CARS LLC & TOP CLASSIC PARTS LLC



©TOP CLASSIC PARTS LLC , Ft. Myers, FL, <https://benz.parts>

Push it all the way back so the top of the part fits to the top corner **as shown above**

TOP CLASSIC CARS LLC & TOP CLASSIC PARTS LLC



Apply glue to the clip and right on the spot where we removed the glue earlier (ref. slide 3), and along the old glued areas too.

Push and hold together until dried and fixed.

We recommend the following glue: 3M Extra Strong WeatherStrip Adhesive, or similars

©TOP CLASSIC PARTS LLC , Ft. Myers, FL, <https://benz.parts>

TOP CLASSIC CARS LLC & TOP CLASSIC PARTS LLC



TOP CLASSIC CARS LLC &
TOP CLASSIC PARTS LLC



To get more information about this part, please
visit [124WSTC](#) at www.benz.parts

To get more information on our Dealership and
latest inventory, please visit www.sl2sell.com

Your ***Top Classic Parts Team***

Fort Myers, FL

Top Classic Parts LLC, 1952 Commercial Dr Fort Myers, FL, 33901
Cell: 404 889 2285 | Email: vladimir@top-classic-cars.com