

TOP CLASSIC CARS LLC &
TOP CLASSIC PARTS LLC



How to replace Mercedes-Benz R129 Domelights (SOS & Regular Versions) and A124 Domelight

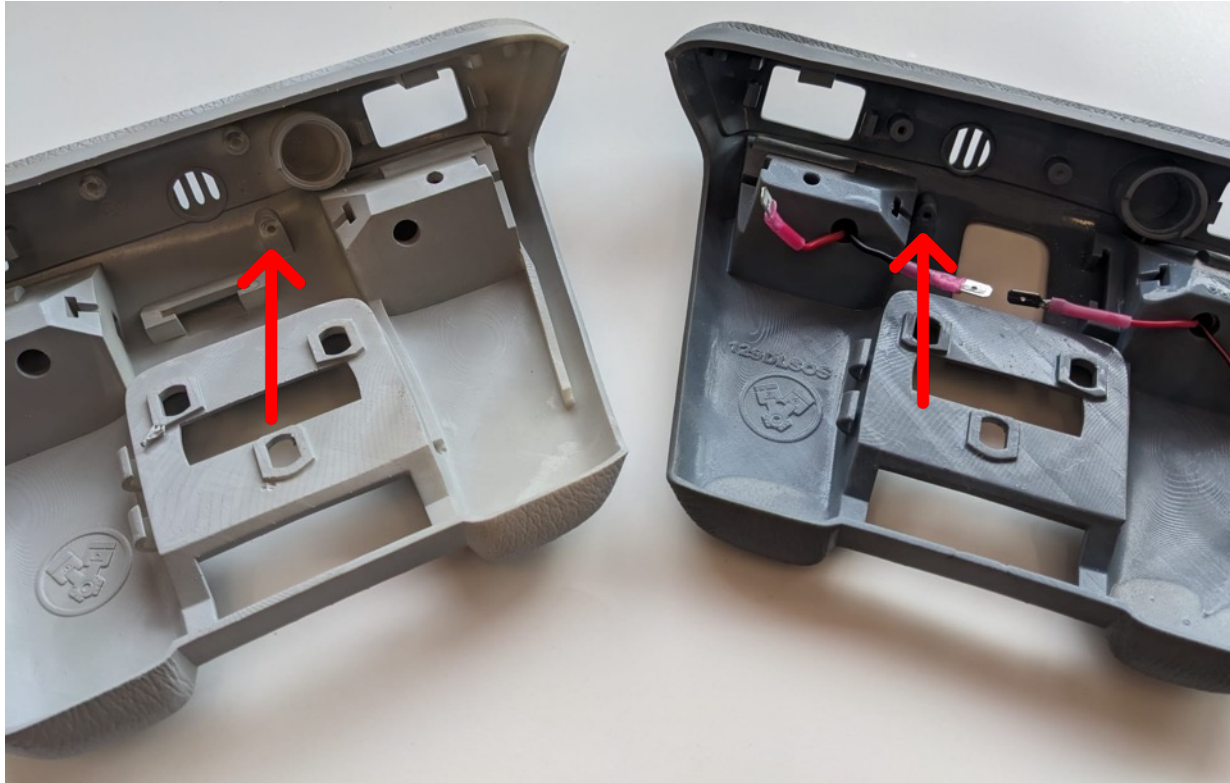
Klaus Hackbarth 1952 Commercial Dr Fort Myers, FL, 33901
Cell: 239 771 0057 Email: order@top-classic-parts.com

TOP CLASSIC CARS LLC & TOP CLASSIC PARTS LLC



Here you can see examples of a Light Gray (129) and a Black (124) as well as version of our 129 SOS Domelight in Gray. The only difference between the 129 and the 124 are the corners marked with red arrows. You can purchase the product via this [link](#).

TOP CLASSIC CARS LLC & TOP CLASSIC PARTS LLC



The installation for the regular 129 and the 124 Domelight are exactly the same. The only difference between the regular 129 and the SOS version is the part that you can see marked in this picture. The SOS version has the 3rd screw of the middle part on the left side instead of the right side as shown later in the HowTo.

TOP CLASSIC CARS LLC & TOP CLASSIC PARTS LLC



The installation can be managed with just those two tools, a medium sized Philipps screwdriver and a smaller flat screwdriver.



TOP CLASSIC CARS LLC & TOP CLASSIC PARTS LLC



Let us start with our Project

TOP CLASSIC CARS LLC & TOP CLASSIC PARTS LLC



The first step is to take the rear view mirror off the Domelight



TOP CLASSIC CARS LLC & TOP CLASSIC PARTS LLC



Hold the mirror with your both hands, like we demonstrate here, and pull it gently down. The mirror is connected to the Domelight with a spring construction. No tool is needed! Video in next slide.



TOP CLASSIC CARS LLC & TOP CLASSIC PARTS LLC



TOP CLASSIC CARS LLC & TOP CLASSIC PARTS LLC



See what happened. ;o) It was time to replace the Domelight! Pull now the connectors in opposite directions. That's it!

TOP CLASSIC CARS LLC & TOP CLASSIC PARTS LLC



Take off at first very carefully the Lenses from the Domelight, with the smallest screwdriver you can find! Start in the mid of the outer side!



©TOP CLASSIC CARS LLC , Ft. Myers, FL, <https://129.parts>

TOP CLASSIC CARS LLC & TOP CLASSIC PARTS LLC



That's the way to do it!
Be careful and don't
destroy the lens!
Do the same at the
other side! Be careful
too and start again in
the mid of the outer
side!



©TOP CLASSIC CARS LLC , Ft. Myers, FL, <https://129.parts>

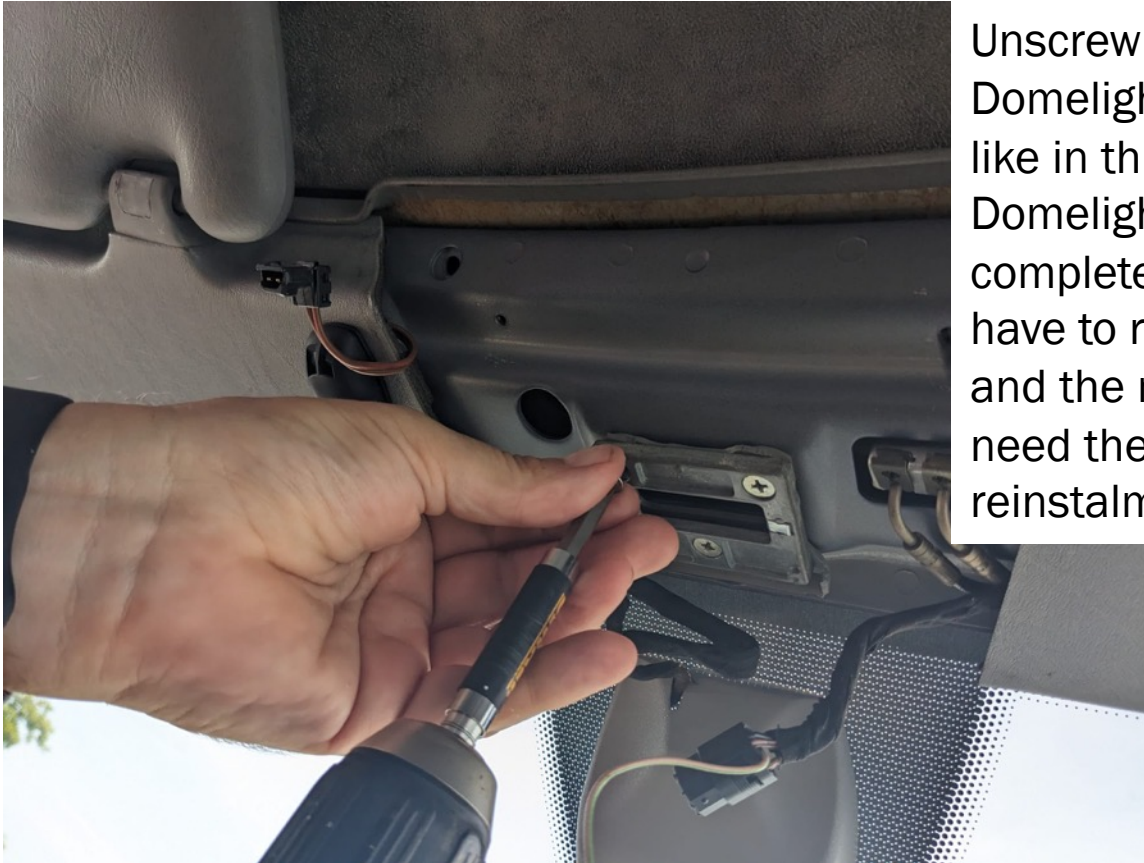
TOP CLASSIC CARS LLC & TOP CLASSIC PARTS LLC



That's the view on the Domelight. It is connected to the frame with 5 Philips screws.



TOP CLASSIC CARS LLC & TOP CLASSIC PARTS LLC



Unscrew them all, to get the Domelight off. It can happen like in this case that the old Domelight falls apart completely.. Then you'll still have to remove the 3 screws and the metal plate as we need them again later in the reinstalment

TOP CLASSIC CARS LLC & TOP CLASSIC PARTS LLC



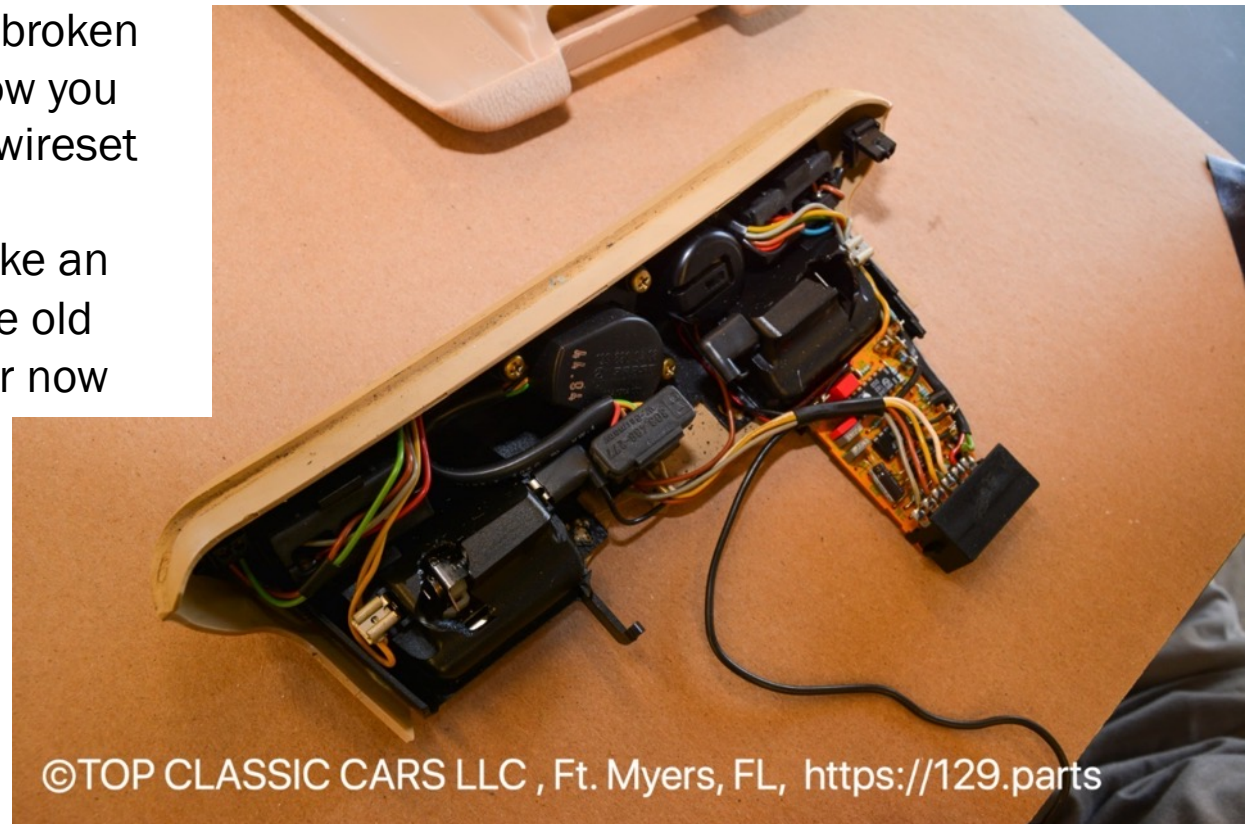
Unplug all the 2 or 4 wire connectors. All of them are easy to unplug.



TOP CLASSIC CARS LLC & TOP CLASSIC PARTS LLC



That's now an example, that should look like your broken genuine part. We show you now how to take the wireset off in several steps... You don't have to make an effort not to break the old Domelight any further now

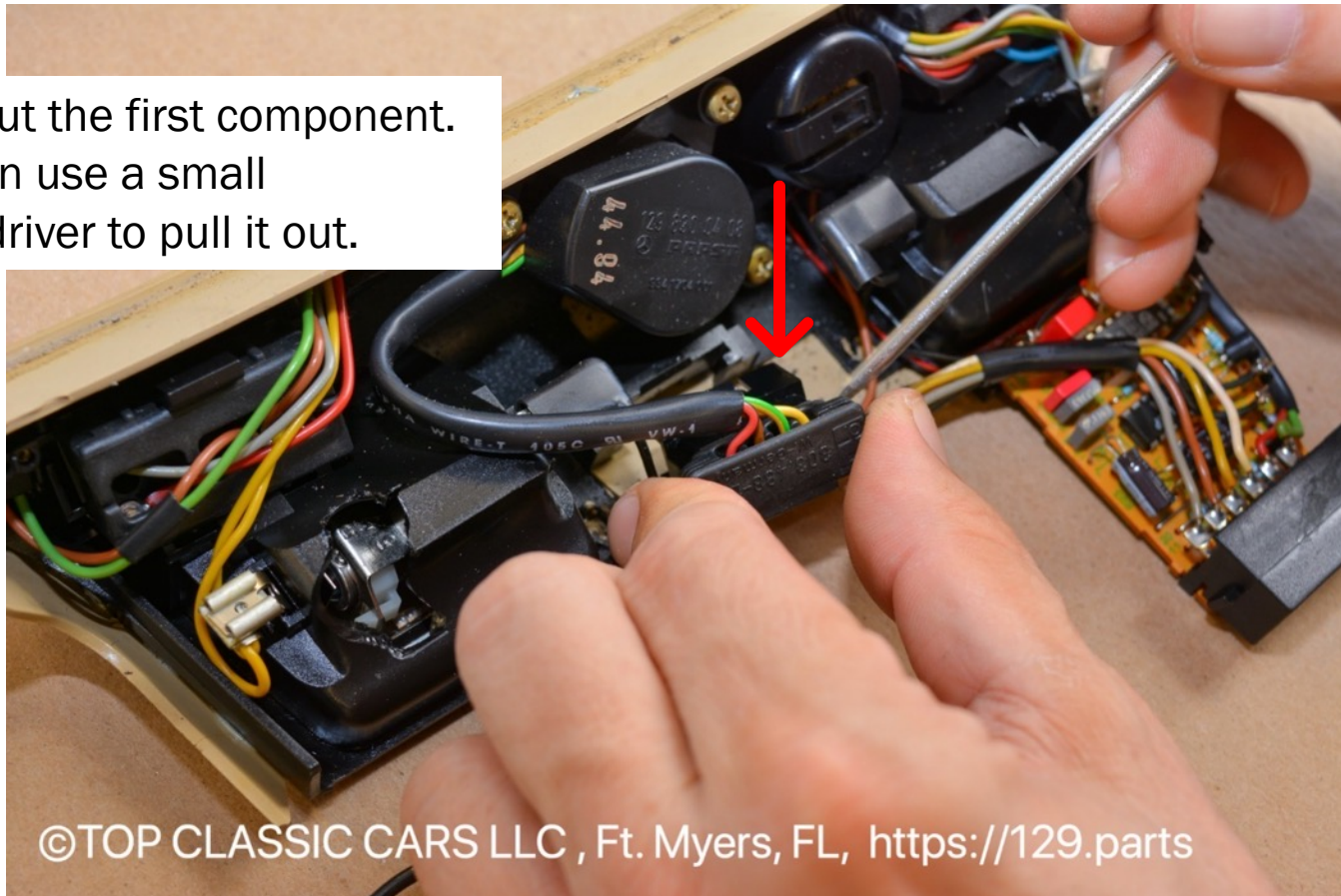


©TOP CLASSIC CARS LLC , Ft. Myers, FL, <https://129.parts>

TOP CLASSIC CARS LLC & TOP CLASSIC PARTS LLC



Take out the first component.
You can use a small
screwdriver to pull it out.

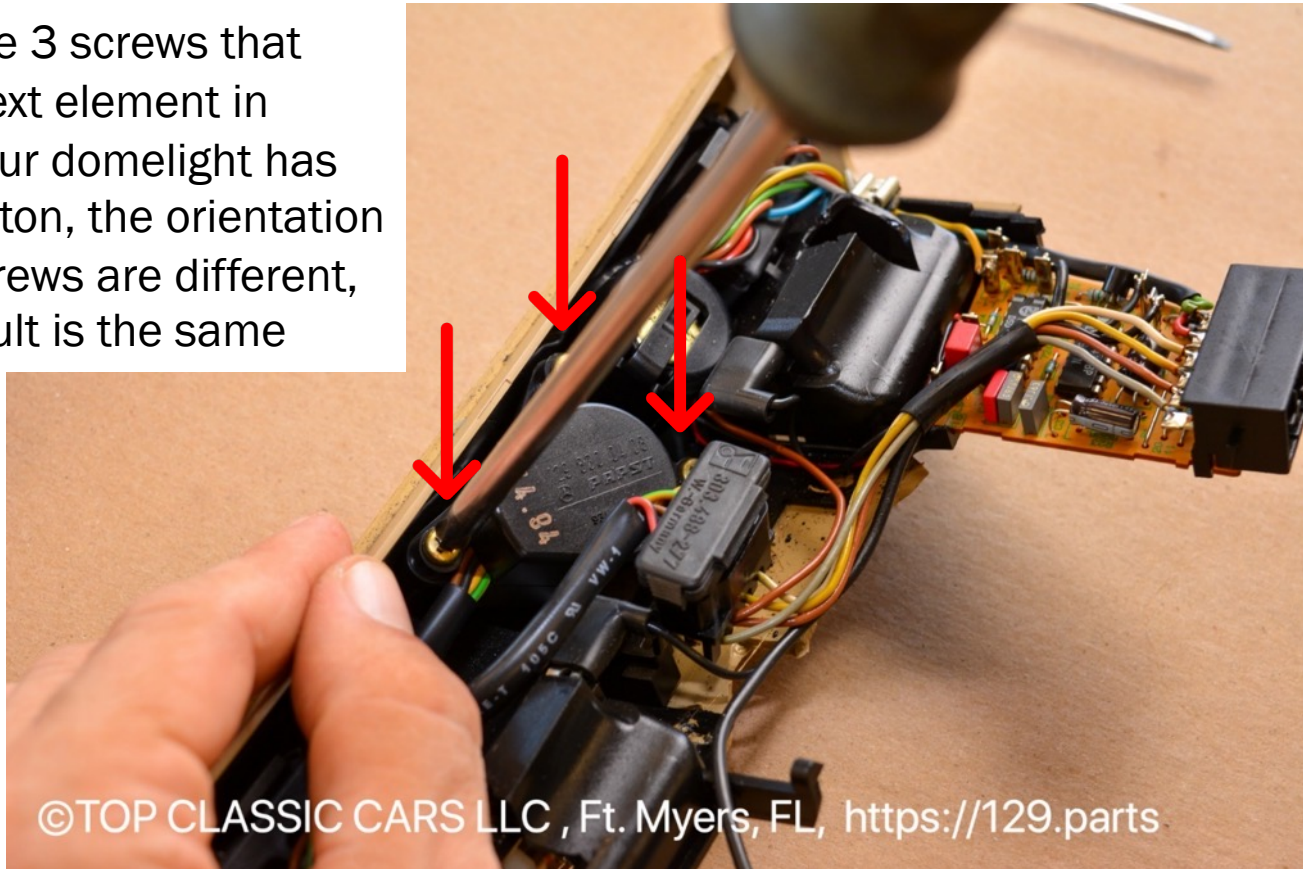


©TOP CLASSIC CARS LLC , Ft. Myers, FL, <https://129.parts>

TOP CLASSIC CARS LLC & TOP CLASSIC PARTS LLC



Unscrew the 3 screws that keep the next element in place.. If your domelight has an SOS Button, the orientation of those screws are different, but the result is the same

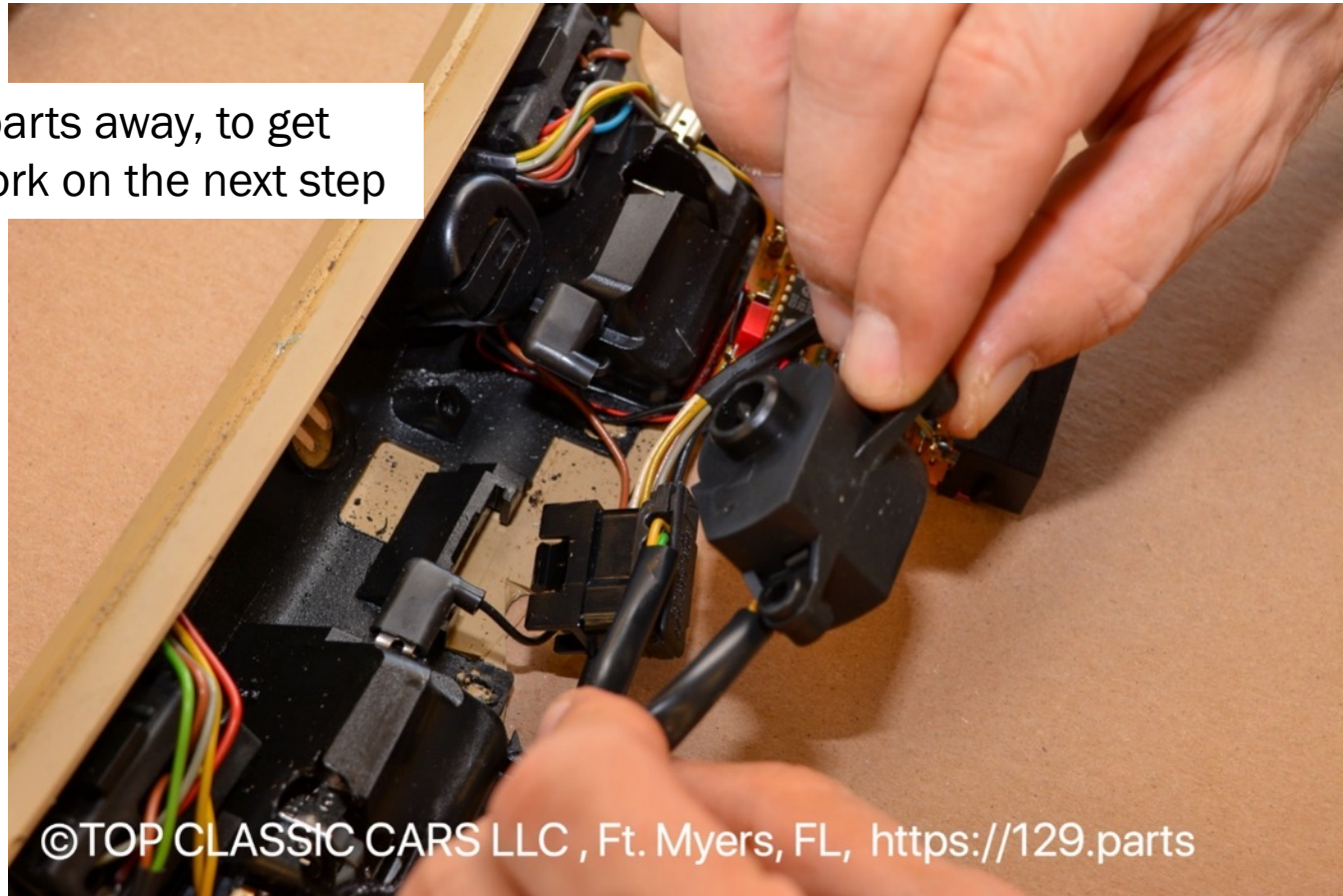


©TOP CLASSIC CARS LLC , Ft. Myers, FL, <https://129.parts>

TOP CLASSIC CARS LLC & TOP CLASSIC PARTS LLC



Pull both parts away, to get room to work on the next step



©TOP CLASSIC CARS LLC , Ft. Myers, FL, <https://129.parts>

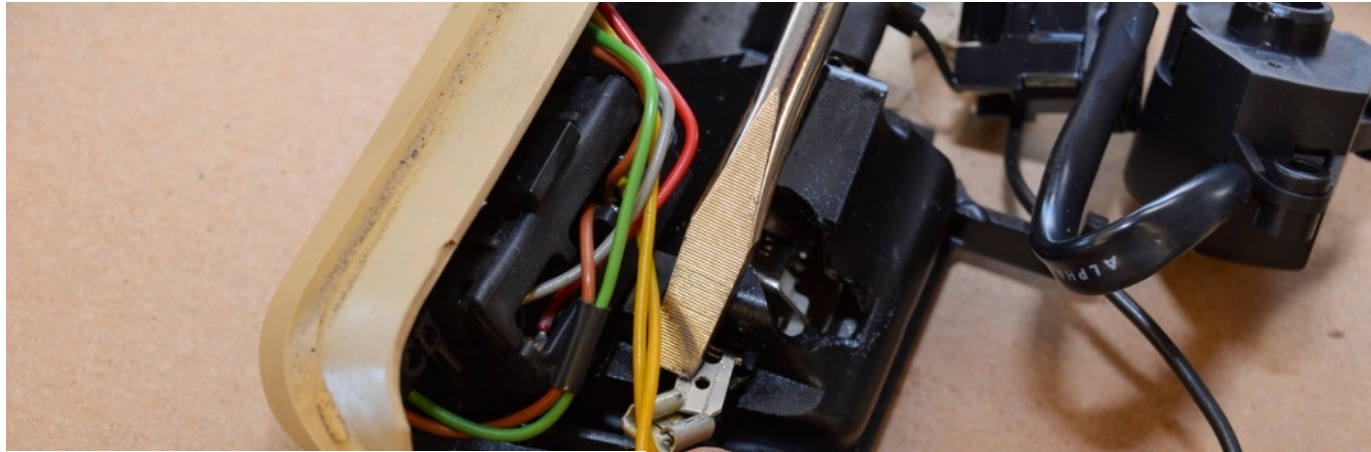
TOP CLASSIC CARS LLC & TOP CLASSIC PARTS LLC



Take off the 4 female shoe connectors at the sides of the interior lens covers with help of a bigger screwdriver

©TOP CLASSIC CARS LLC , Ft. Myers, FL, <https://129.parts>

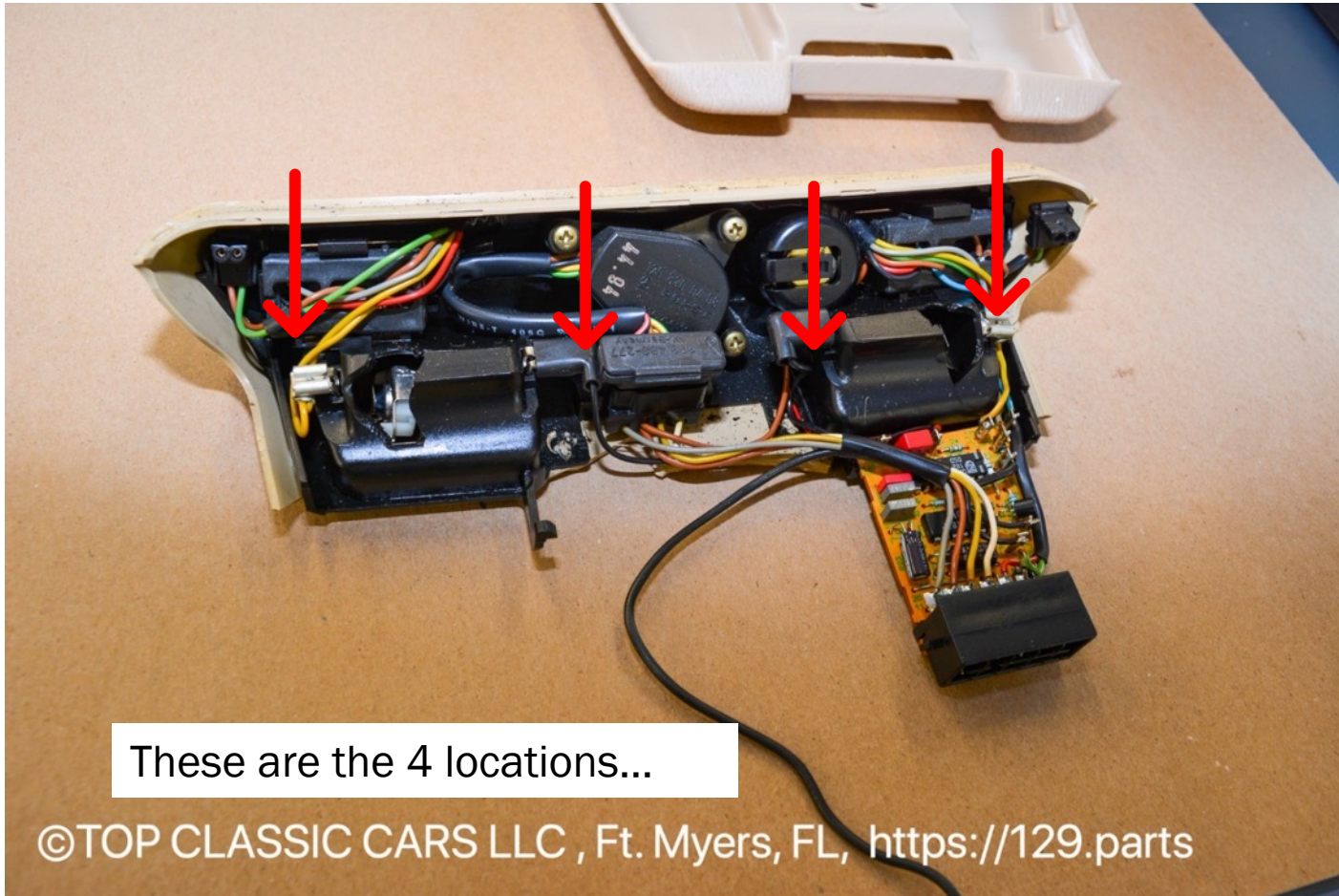
TOP CLASSIC CARS LLC & TOP CLASSIC PARTS LLC



Do the same with the other 3

©TOP CLASSIC CARS LLC , Ft. Myers, FL, <https://129.parts>

TOP CLASSIC CARS LLC & TOP CLASSIC PARTS LLC



These are the 4 locations...

©TOP CLASSIC CARS LLC , Ft. Myers, FL, <https://129.parts>

TOP CLASSIC CARS LLC & TOP CLASSIC PARTS LLC



Start to disassemble the left switch with a big screwdriver. You don't have to be too carefully with the old black clips of the interior black plastic. They will break if they are not yet broken



©TOP CLASSIC CARS LLC , Ft. Myers, FL, <https://129.parts>

TOP CLASSIC CARS LLC & TOP CLASSIC PARTS LLC



The switches are held by 3 clips. There are 2 side clips and 1 clip on top

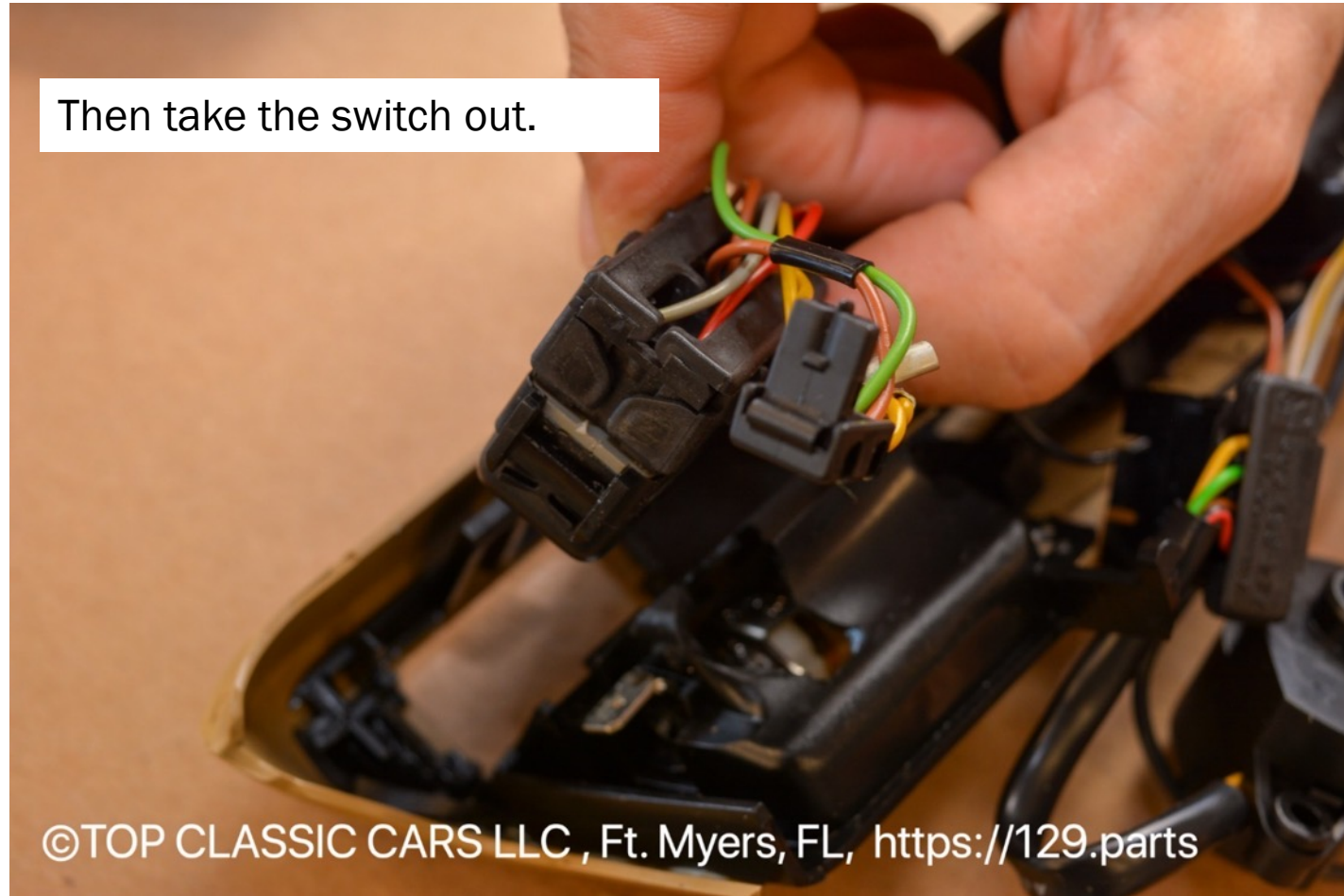


©TOP CLASSIC CARS LLC , Ft. Myers, FL, <https://129.parts>

TOP CLASSIC CARS LLC & TOP CLASSIC PARTS LLC



Then take the switch out.

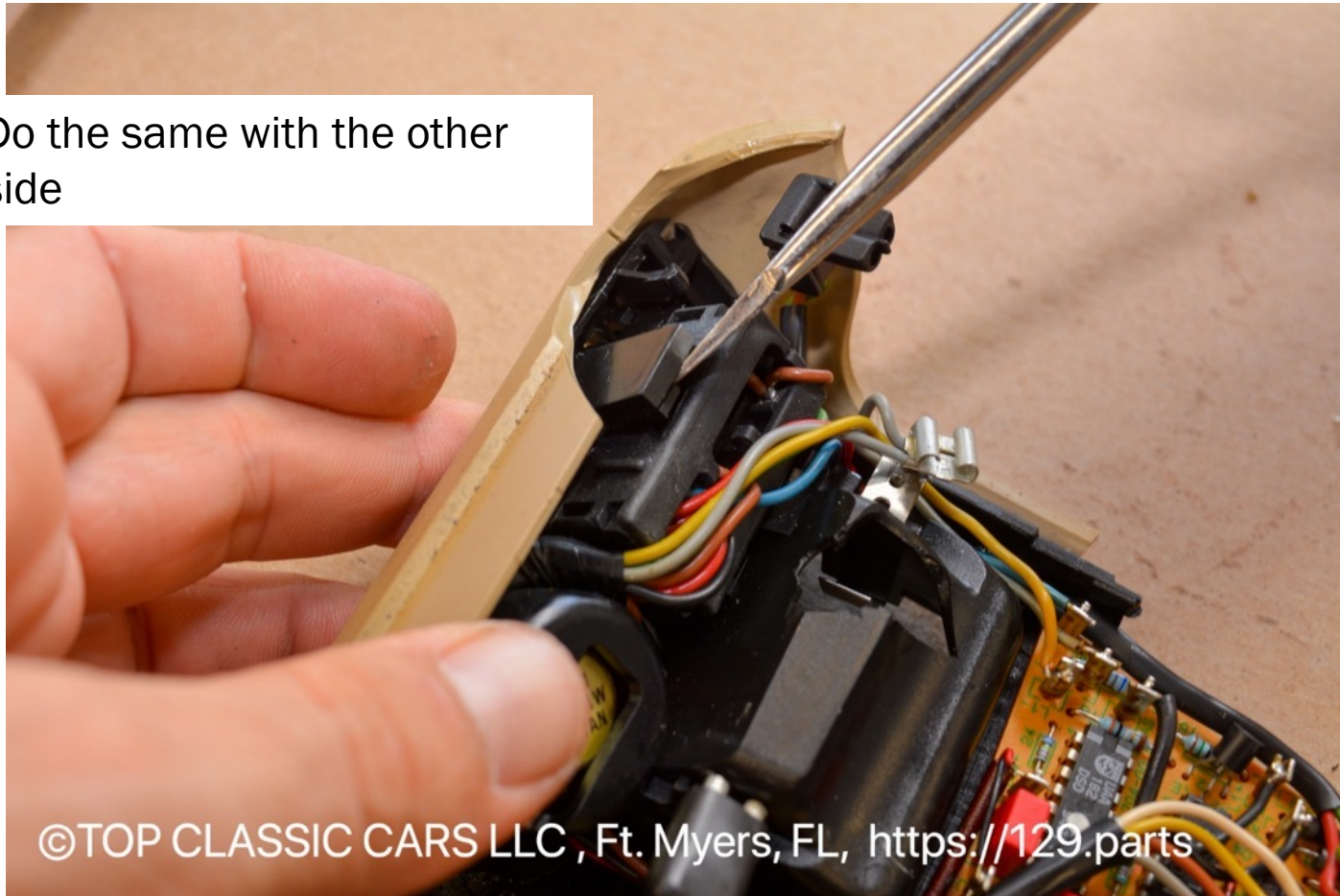


©TOP CLASSIC CARS LLC , Ft. Myers, FL, <https://129.parts>

TOP CLASSIC CARS LLC & TOP CLASSIC PARTS LLC



Do the same with the other side

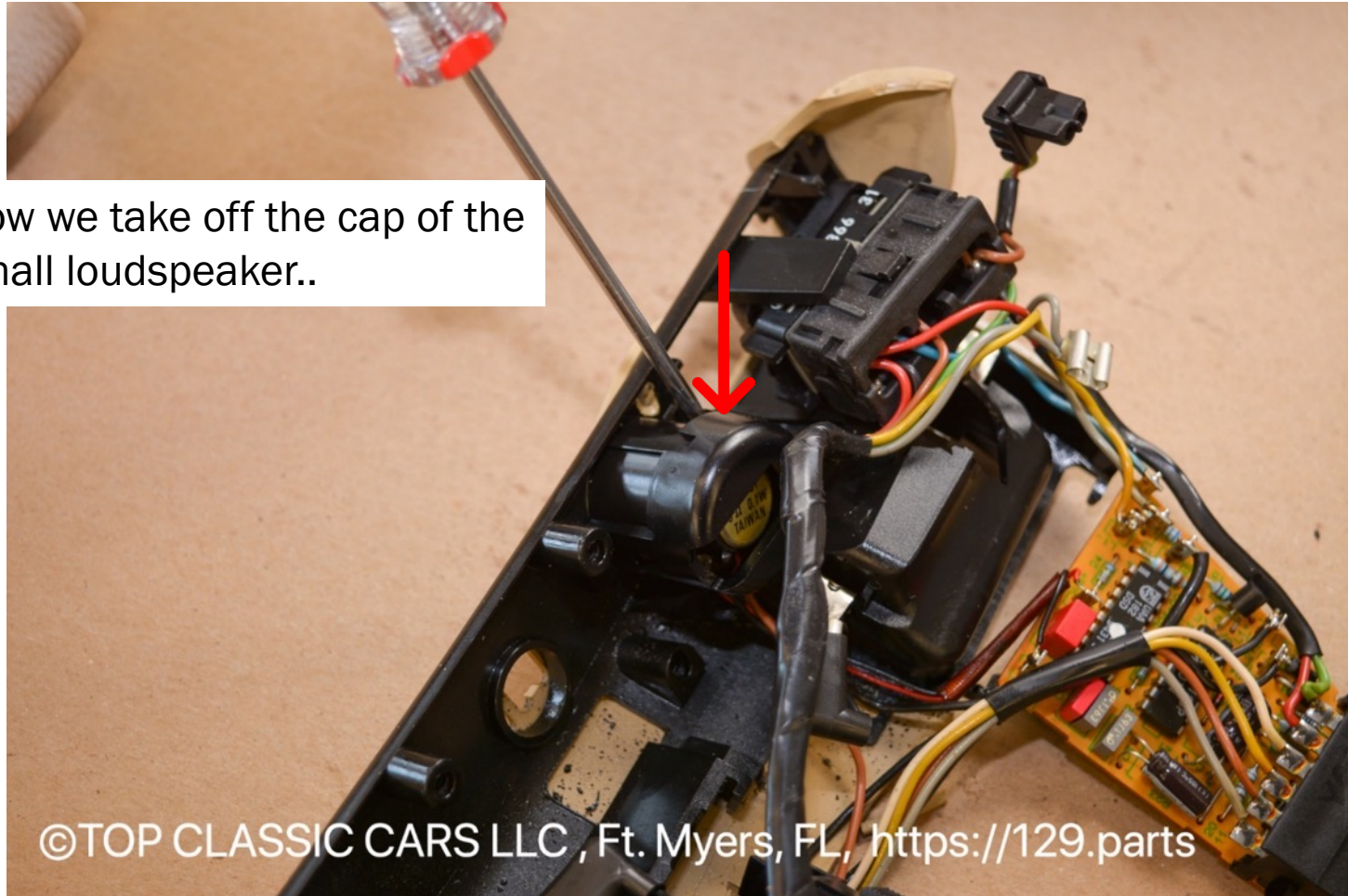


©TOP CLASSIC CARS LLC , Ft. Myers, FL, <https://129.parts>

TOP CLASSIC CARS LLC & TOP CLASSIC PARTS LLC



Now we take off the cap of the
small loudspeaker..



©TOP CLASSIC CARS LLC , Ft. Myers, FL, <https://129.parts>

TOP CLASSIC CARS LLC & TOP CLASSIC PARTS LLC



Then we take the loudspeaker
off

©TOP CLASSIC CARS LLC , Ft. Myers, FL, <https://129.parts>

TOP CLASSIC CARS LLC & TOP CLASSIC PARTS LLC

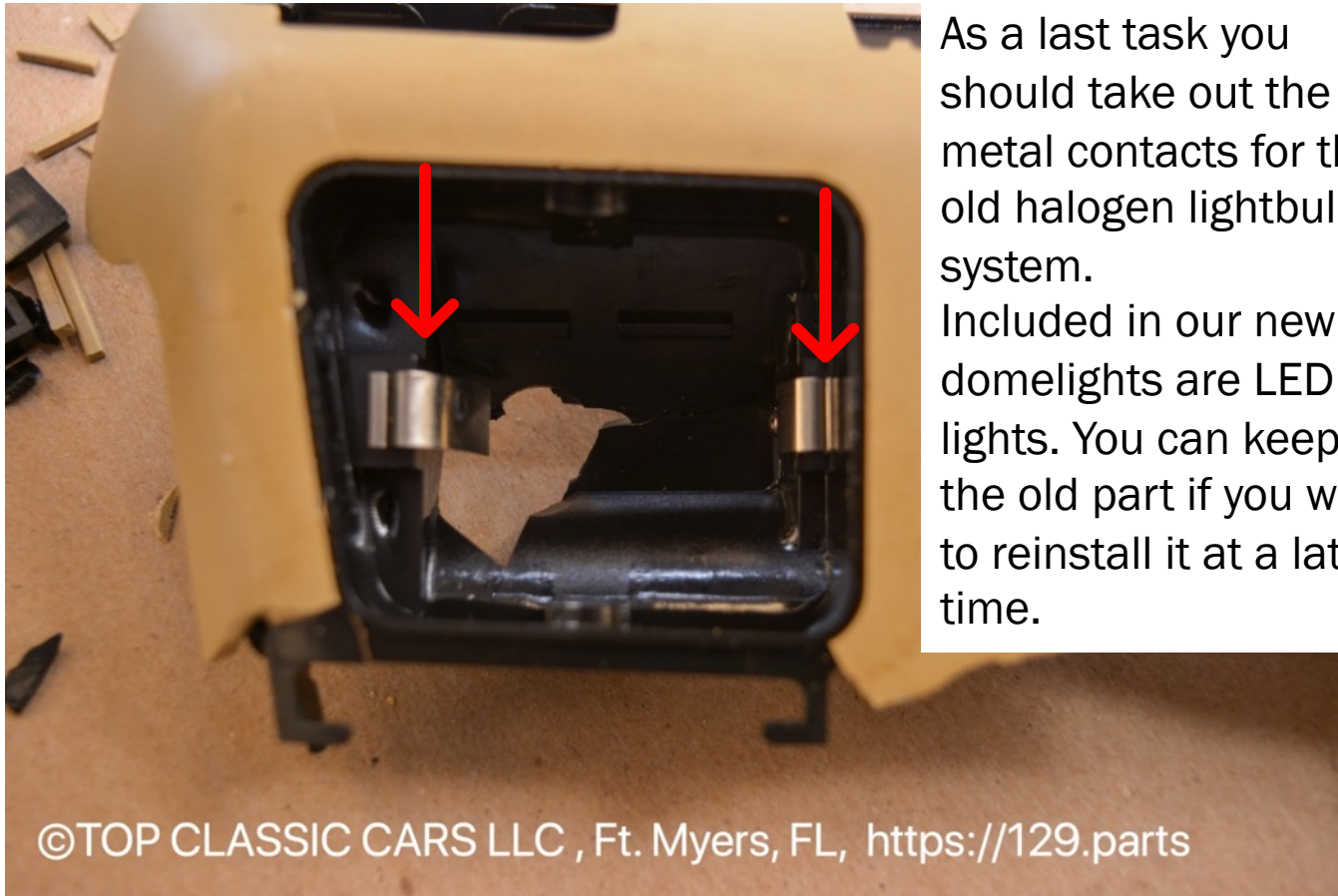


Now that you have
disassembled everything it
should look like this



©TOP CLASSIC CARS LLC , Ft. Myers, FL, <https://129.parts>

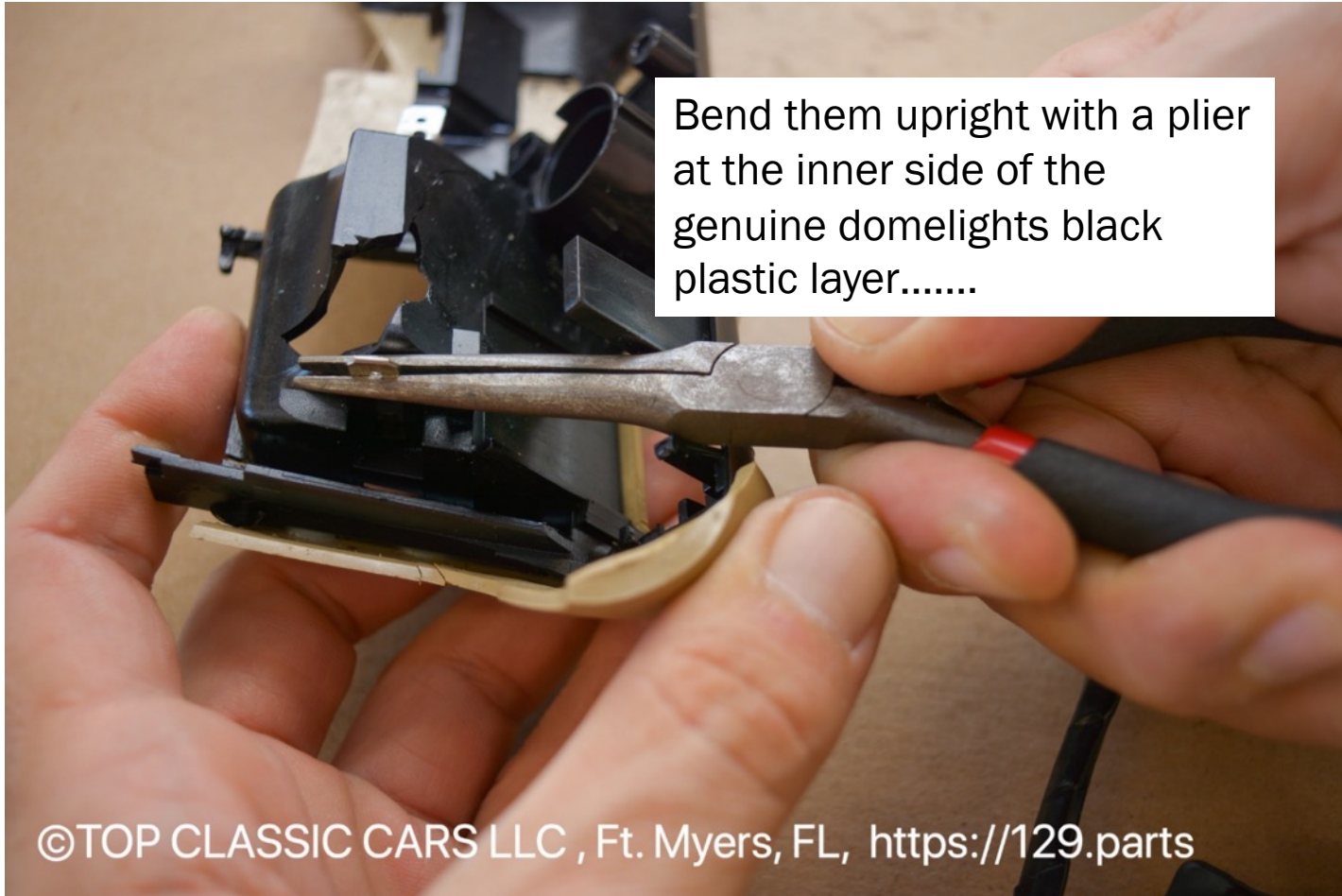
TOP CLASSIC CARS LLC & TOP CLASSIC PARTS LLC



As a last task you should take out the metal contacts for the old halogen lightbulb system. Included in our new domelights are LED lights. You can keep the old part if you want to reinstall it at a later time.

©TOP CLASSIC CARS LLC , Ft. Myers, FL, <https://129.parts>

TOP CLASSIC CARS LLC & TOP CLASSIC PARTS LLC

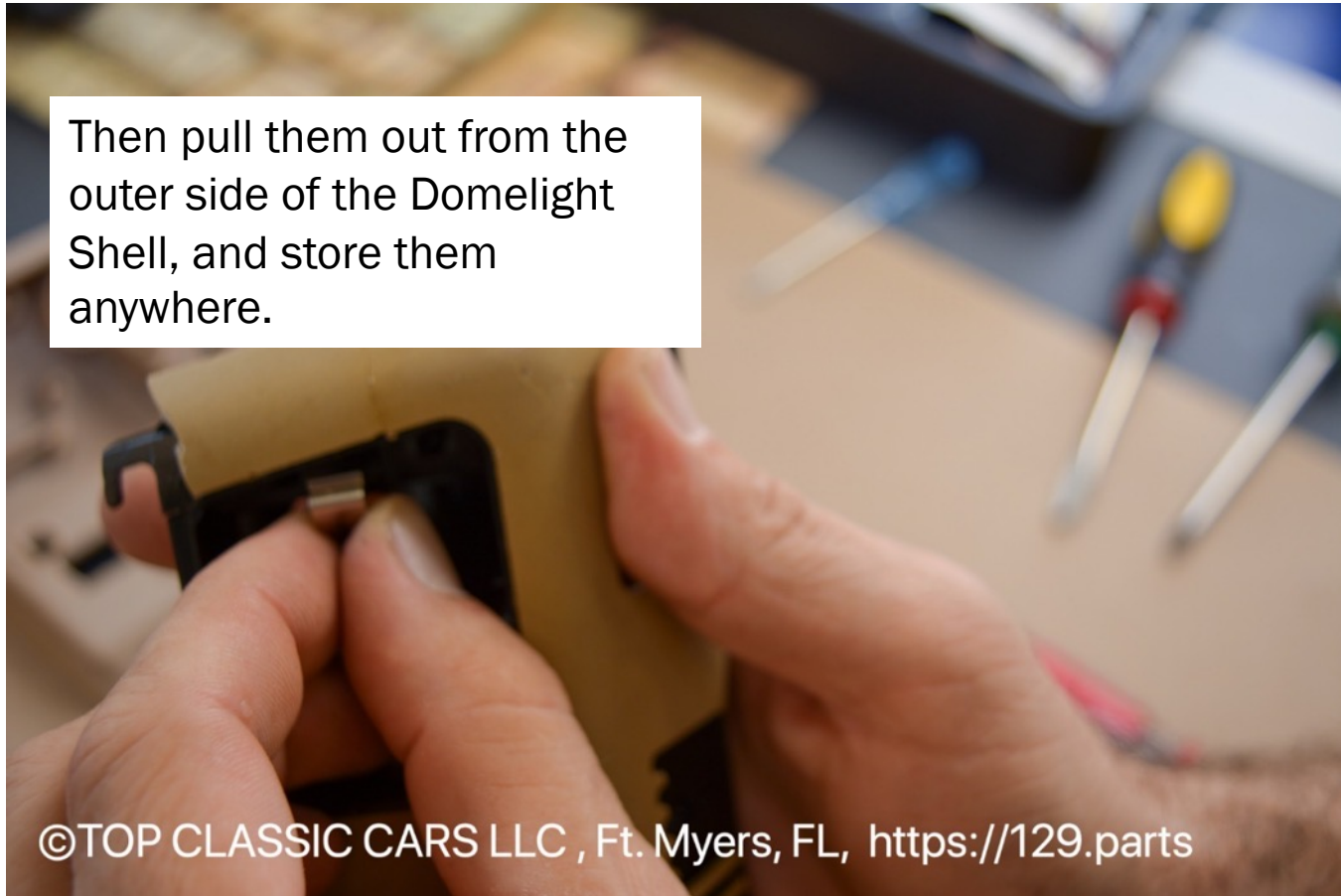


©TOP CLASSIC CARS LLC , Ft. Myers, FL, <https://129.parts>

TOP CLASSIC CARS LLC & TOP CLASSIC PARTS LLC



Then pull them out from the
outer side of the Domelight
Shell, and store them
anywhere.



©TOP CLASSIC CARS LLC , Ft. Myers, FL, <https://129.parts>

TOP CLASSIC CARS LLC & TOP CLASSIC PARTS LLC



TOP CLASSIC CARS LLC & TOP CLASSIC PARTS LLC



That's all the wiring we have to put in
our new Domelight Assembly from Top
Classic Parts



©TOP CLASSIC CARS LLC , Ft. Myers, FL, <https://129.parts>

TOP CLASSIC CARS LLC & TOP CLASSIC PARTS LLC



Let us start again step by step, beginning with the last step of the disassembling as the first step of the reassembling...

TOP CLASSIC CARS LLC & TOP CLASSIC PARTS LLC



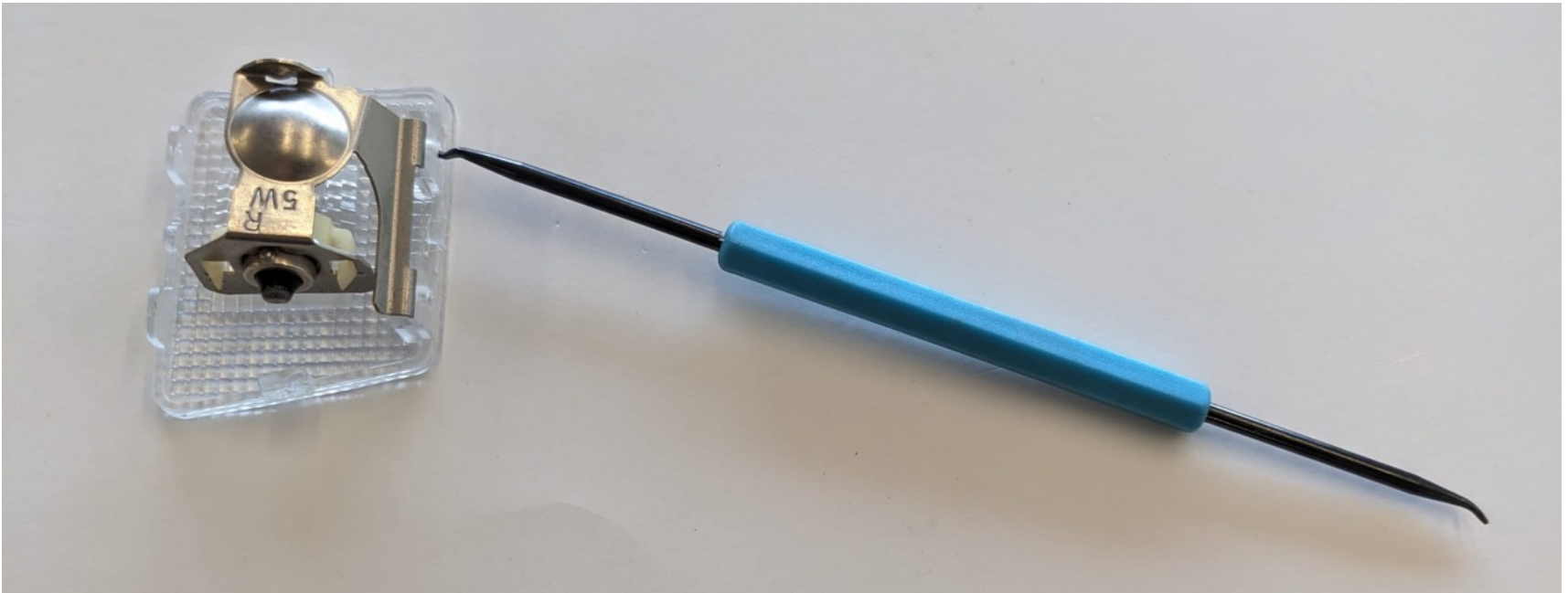
If you like to use the old light lens with the old bulbs, then you have to put the 4 contacts again in place of your new Domelight Assembly.
If you use our LED lights you don't have to do this step.



TOP CLASSIC CARS LLC & TOP CLASSIC PARTS LLC



If you don't want to use your old lights, you will have to remove the metal piece of the lense. For easy removal of the metal, you must push a small spiky tool into the holes as pictured below.



TOP CLASSIC CARS LLC & TOP CLASSIC PARTS LLC



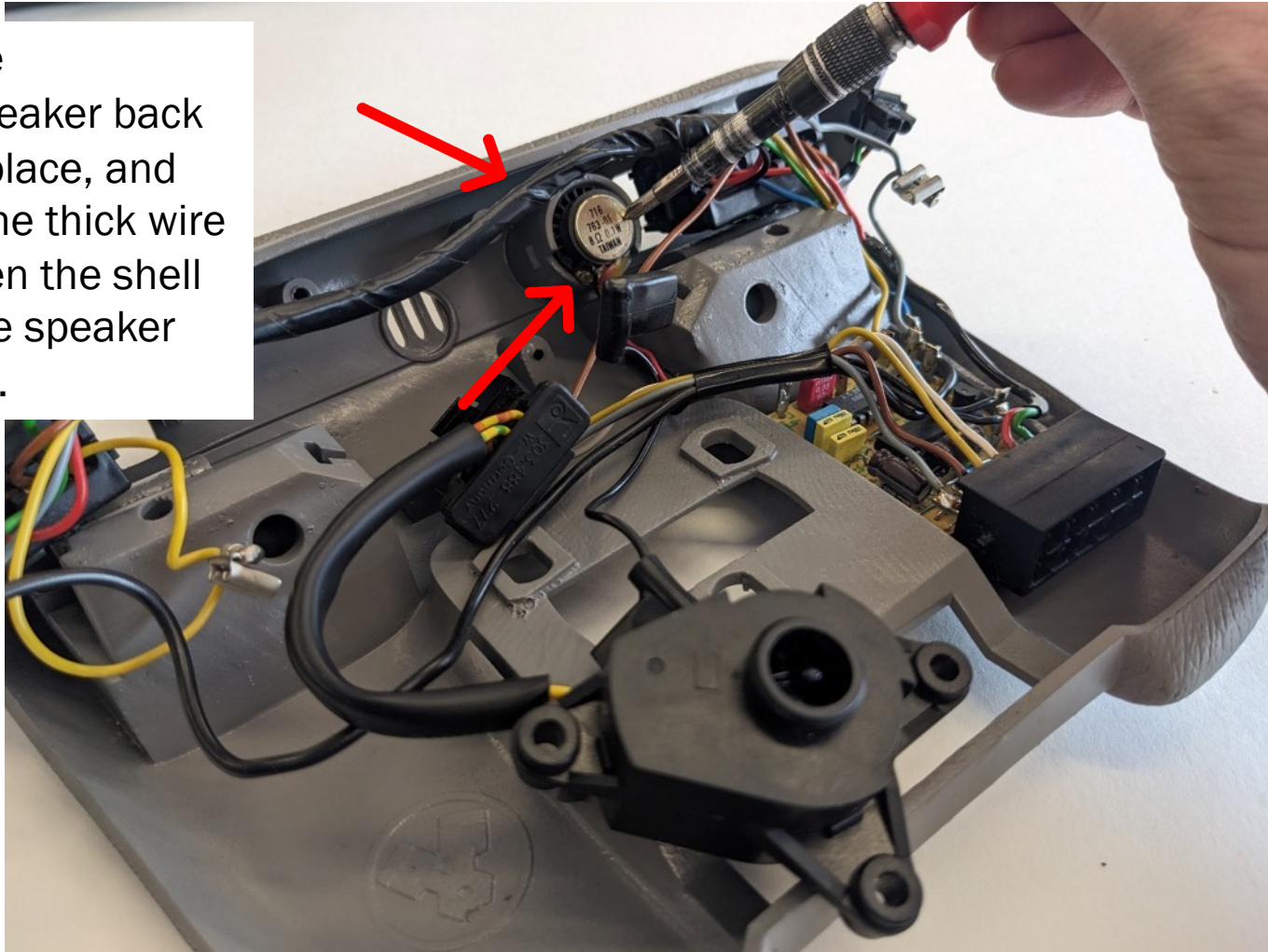
Start and reorder the wires at the beginning, like we did here!



TOP CLASSIC CARS LLC & TOP CLASSIC PARTS LLC



Put the
loudspeaker back
in his place, and
push the thick wire
between the shell
and the speaker
holder..



TOP CLASSIC CARS LLC & TOP CLASSIC PARTS LLC



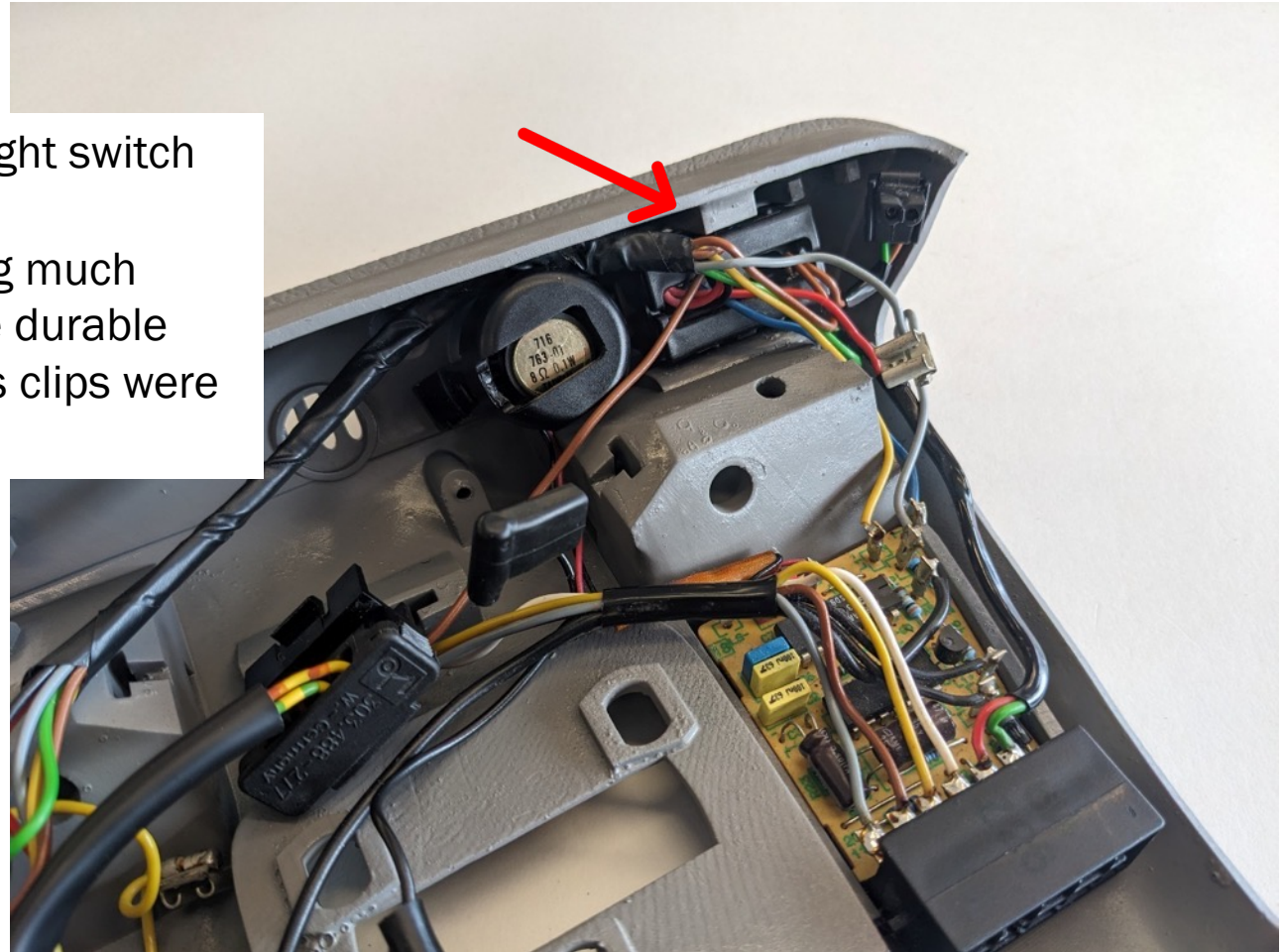
Plug the Speaker Cap again
above the speaker

TOP CLASSIC CARS LLC & TOP CLASSIC PARTS LLC



Then plug in the right switch
back in place...

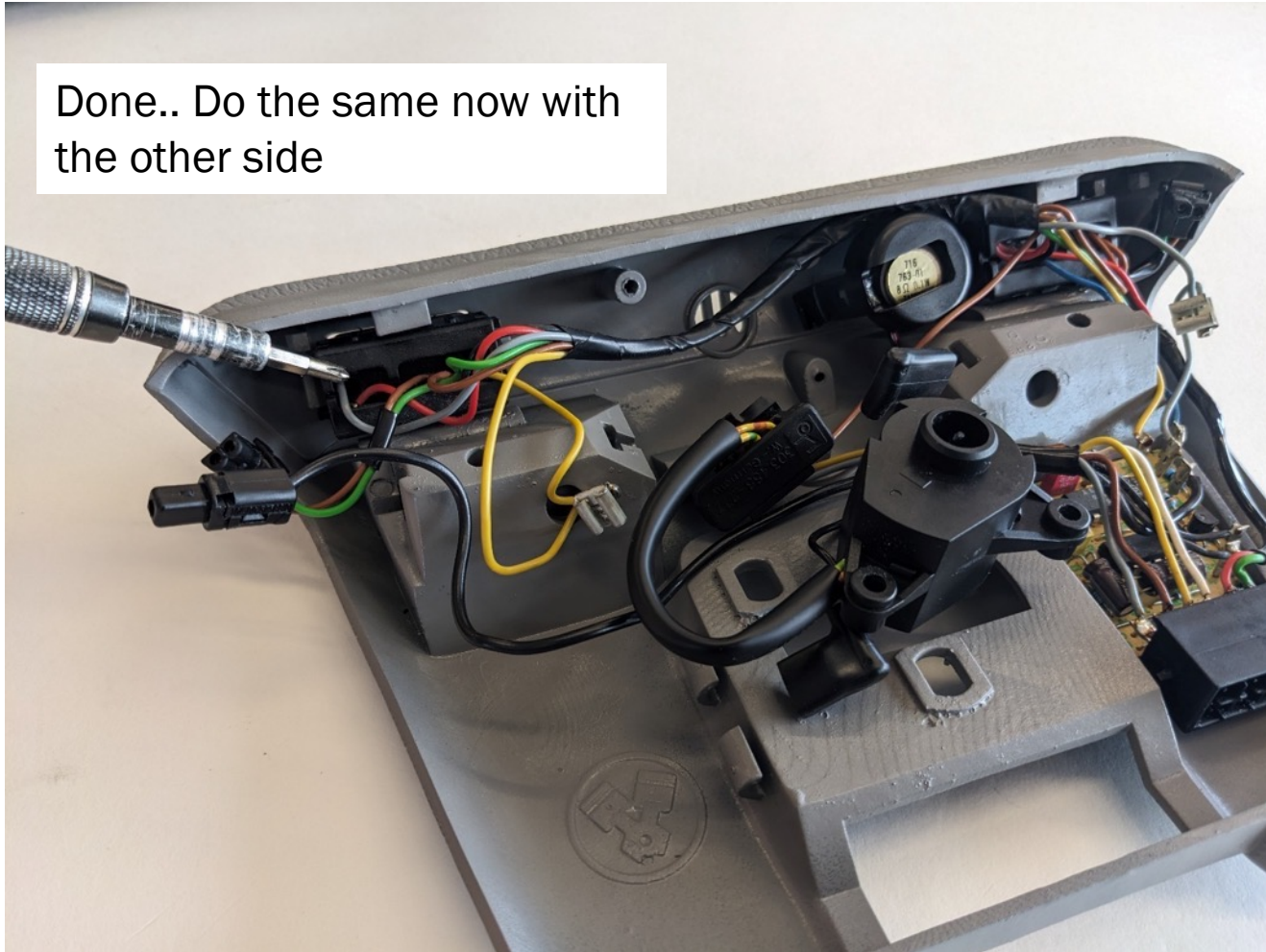
We built everything much
stronger and more durable
then the genuine's clips were
built



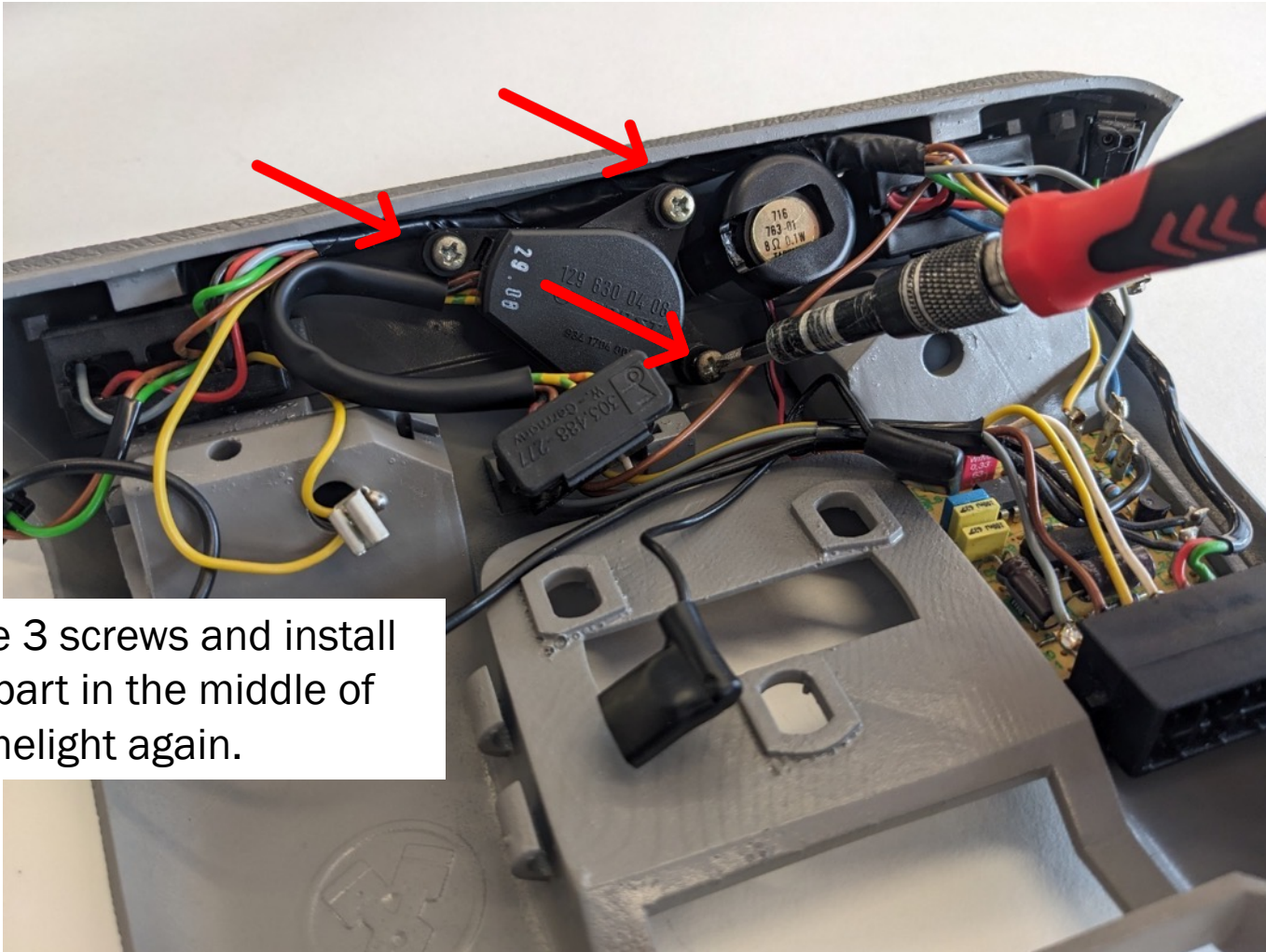
TOP CLASSIC CARS LLC & TOP CLASSIC PARTS LLC



Done.. Do the same now with
the other side



TOP CLASSIC CARS LLC & TOP CLASSIC PARTS LLC

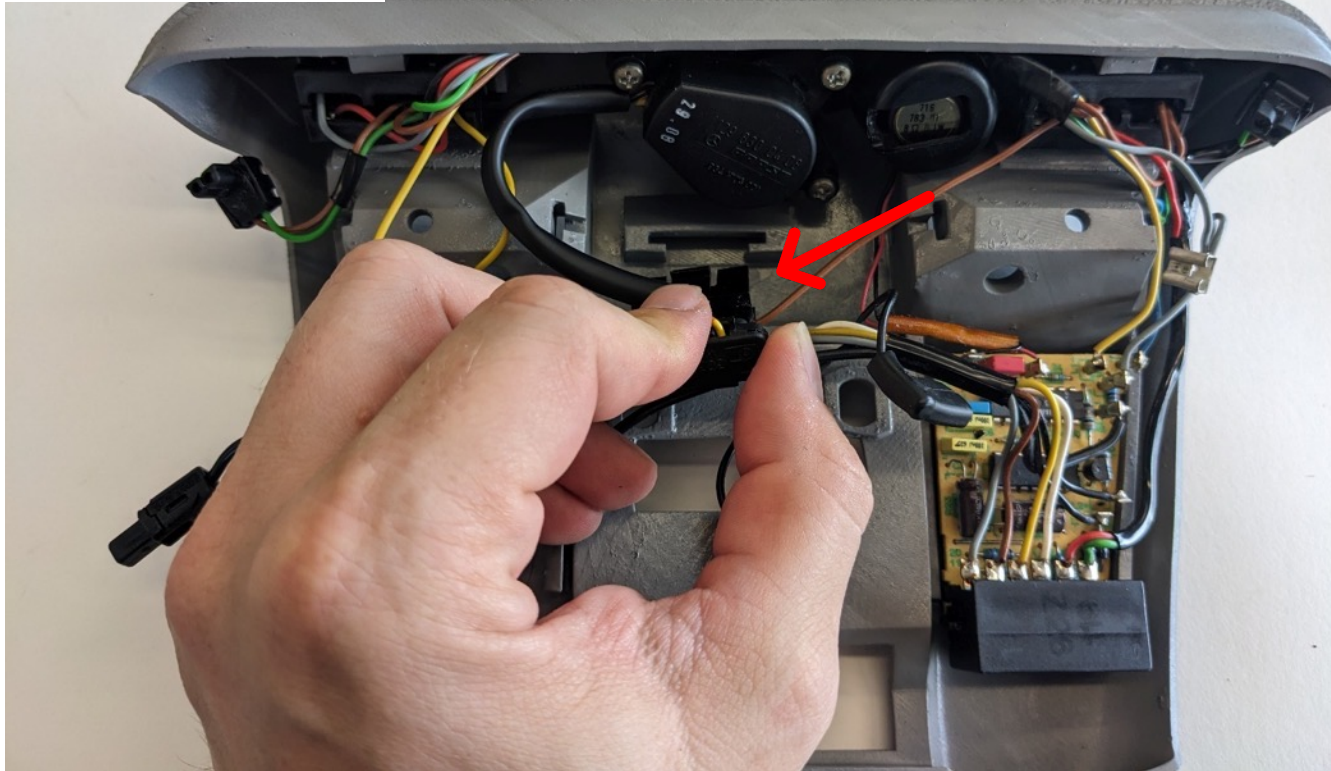


Take the 3 screws and install the big part in the middle of the Domelight again.

TOP CLASSIC CARS LLC & TOP CLASSIC PARTS LLC



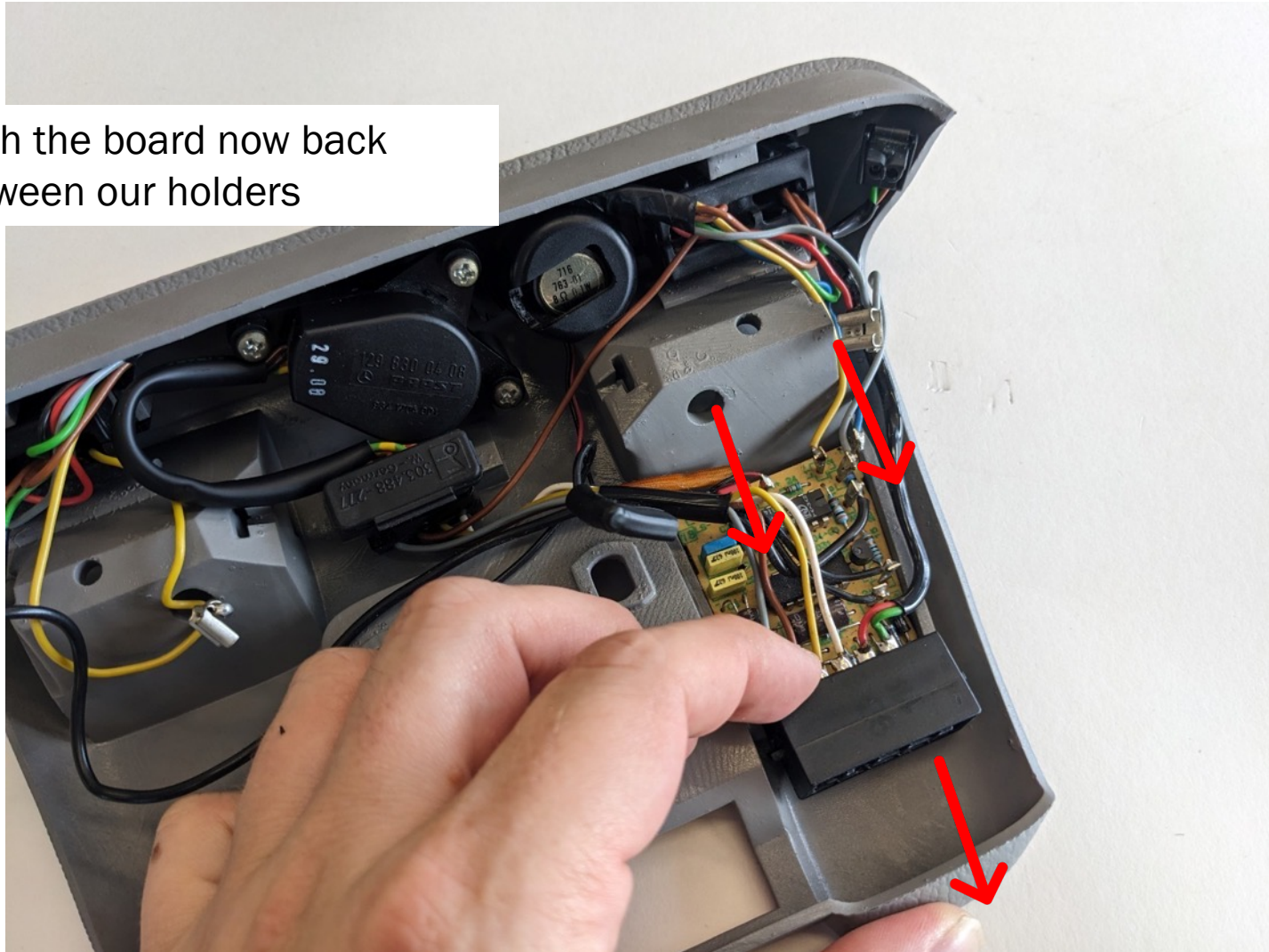
Plug in the the other
wires in their place



TOP CLASSIC CARS LLC & TOP CLASSIC PARTS LLC



Push the board now back
between our holders



TOP CLASSIC CARS LLC & TOP CLASSIC PARTS LLC



Now let us install the new LED inserts in our reflectors

©TOP CLASSIC CARS LLC , Ft. Myers, FL, <https://129.parts>

TOP CLASSIC CARS LLC & TOP CLASSIC PARTS LLC



Put the 2 wires with the eyelet connectors one after another through the large hole



TOP CLASSIC CARS LLC & TOP CLASSIC PARTS LLC



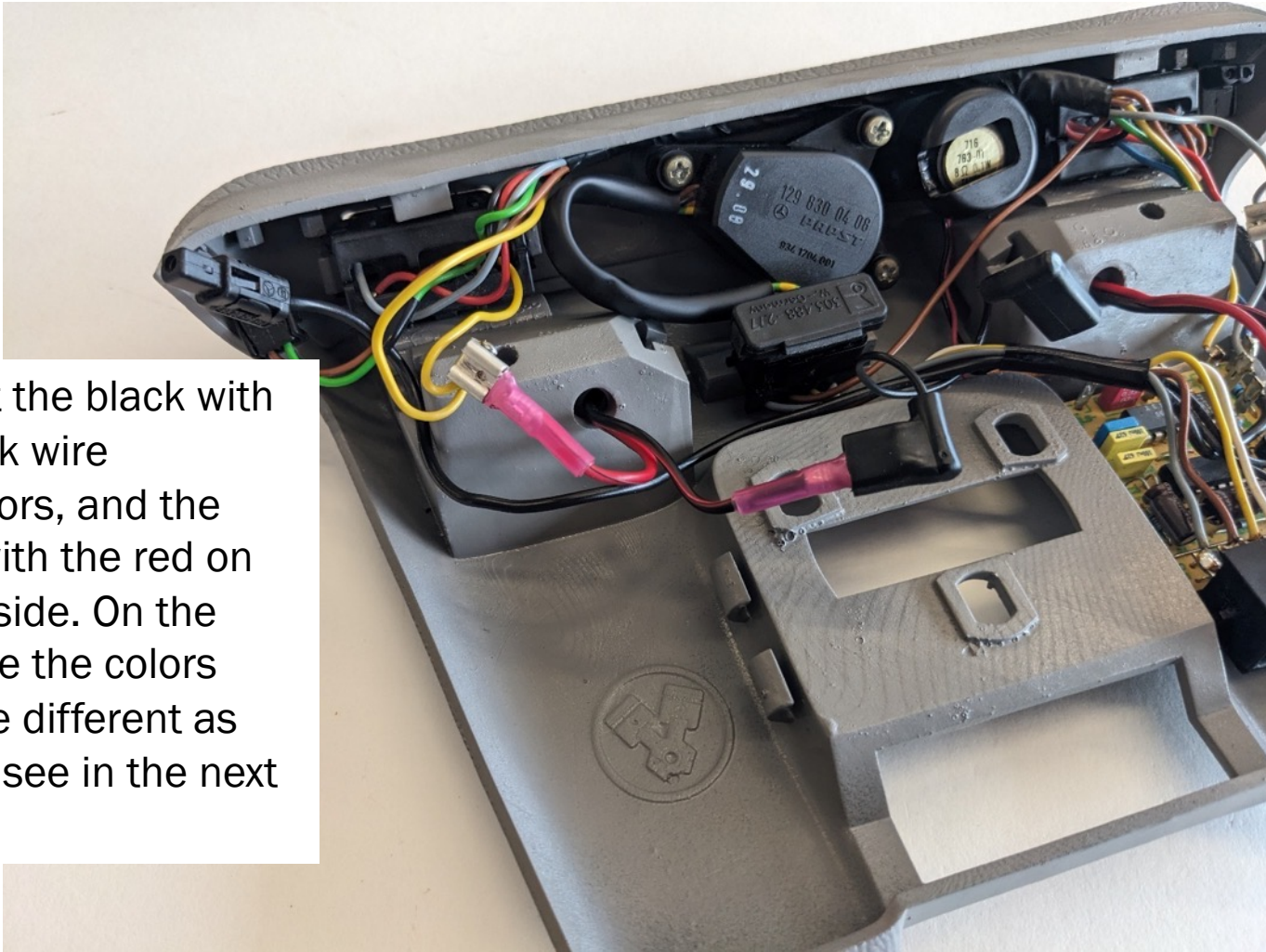
Then put the reflector with the LED in the opening.. Should look like this, do the same on the other side



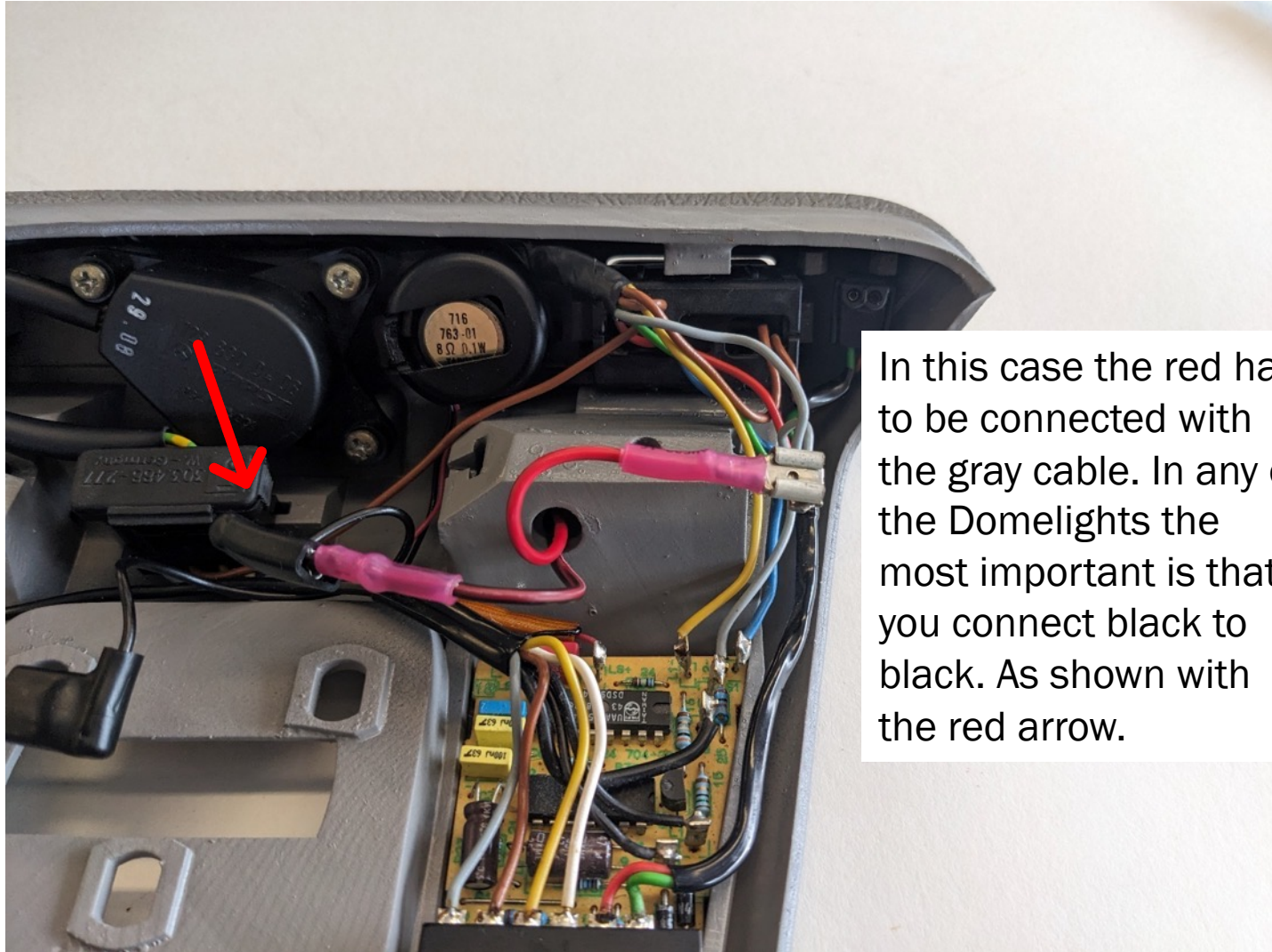
TOP CLASSIC CARS LLC & TOP CLASSIC PARTS LLC



Connect the black with the black wire connectors, and the yellow with the red on the left side. On the right side the colors might be different as you can see in the next slide.



TOP CLASSIC CARS LLC & TOP CLASSIC PARTS LLC

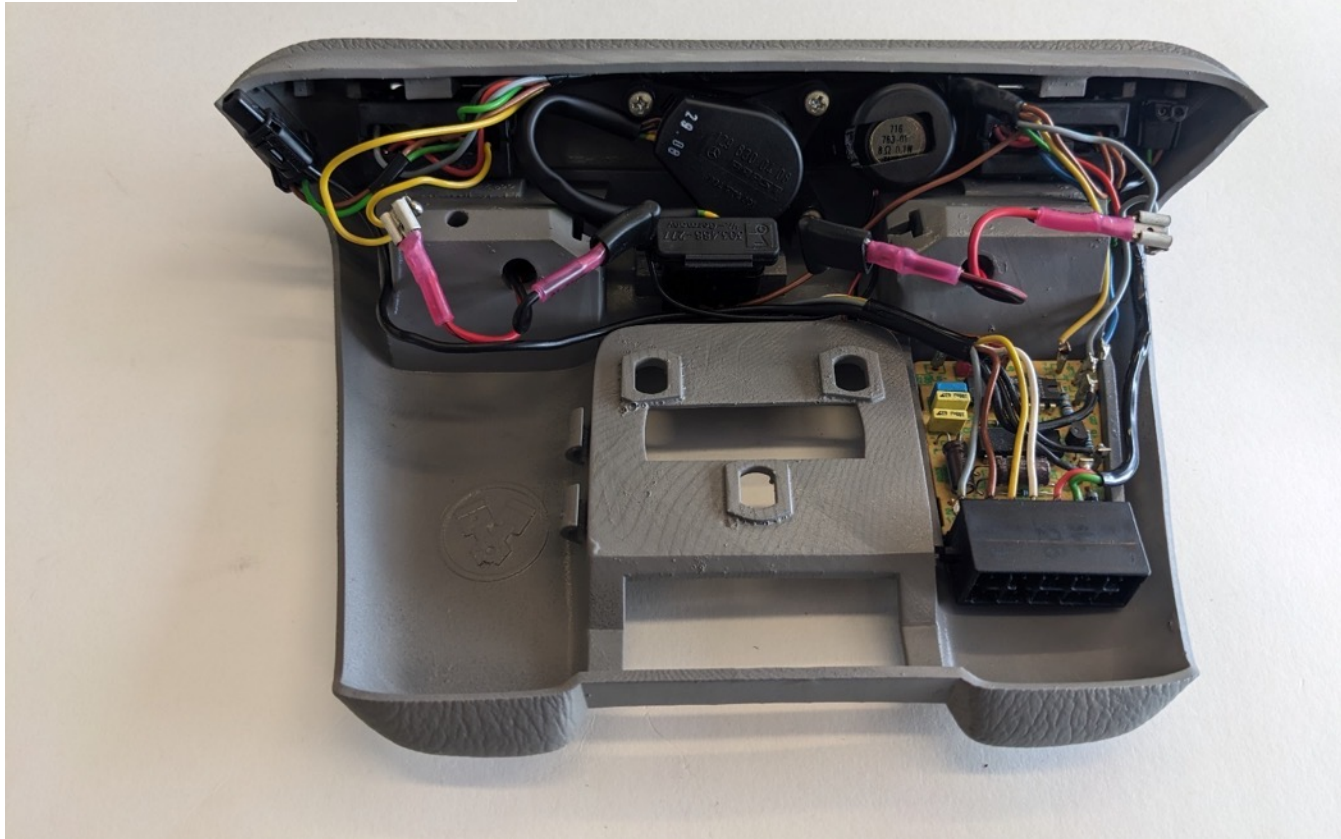


In this case the red has to be connected with the gray cable. In any of the Domelights the most important is that you connect black to black. As shown with the red arrow.

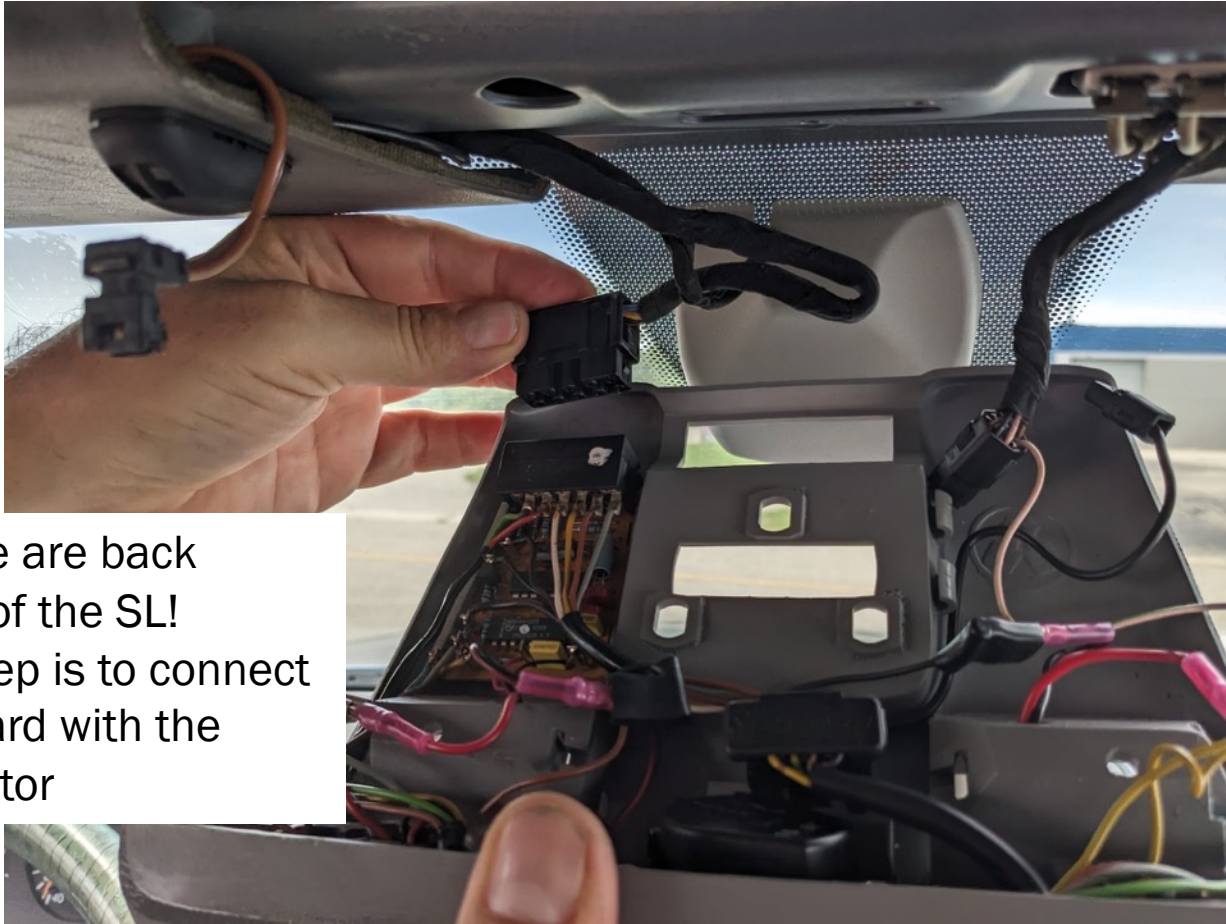
TOP CLASSIC CARS LLC & TOP CLASSIC PARTS LLC



It should look then like this
picture shows ...



TOP CLASSIC CARS LLC & TOP CLASSIC PARTS LLC

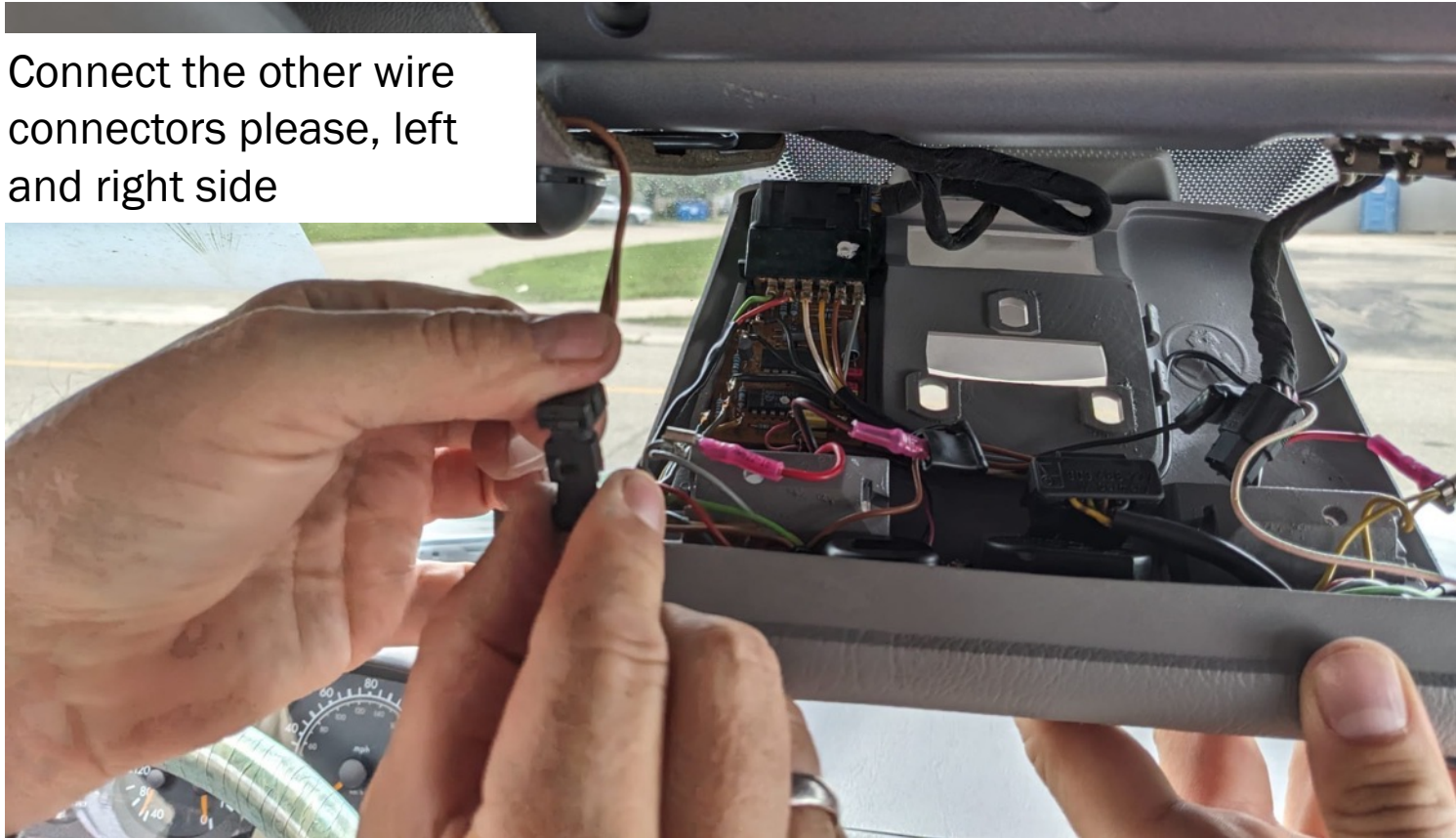


Now we are back
inside of the SL!
First step is to connect
the board with the
connector

TOP CLASSIC CARS LLC & TOP CLASSIC PARTS LLC



Connect the other wire
connectors please, left
and right side



TOP CLASSIC CARS LLC & TOP CLASSIC PARTS LLC



TOP CLASSIC CARS LLC & TOP CLASSIC PARTS LLC



And the last wire,
depending you have the
sensor, you might only
have 3 wires.



TOP CLASSIC CARS LLC & TOP CLASSIC PARTS LLC



Before you install the Domelight you have to push the connector for the Rearview Mirror in the opening behind the hole for the metal plate



TOP CLASSIC CARS LLC & TOP CLASSIC PARTS LLC



Check that all wires are inside the Assembly, and start to screw the Domelight with the 5 screws on the frame, with the Mirror Connector hanging outside..



TOP CLASSIC CARS LLC & TOP CLASSIC PARTS LLC



After you fixed the outer two screws through the LED lights you can screw in the last 3 screws with the metal plate.



TOP CLASSIC CARS LLC & TOP CLASSIC PARTS LLC



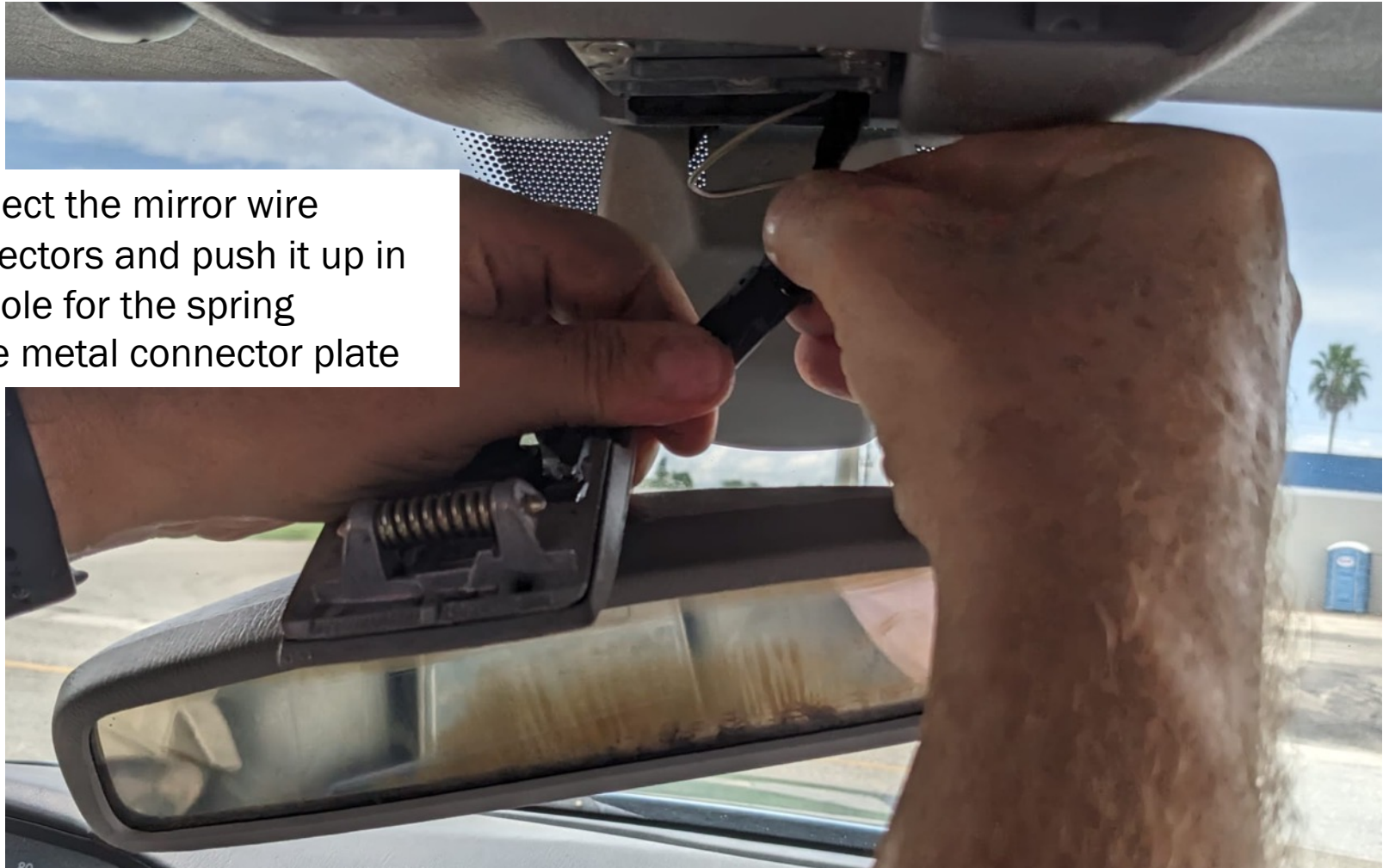
After you did those 3 you're almost done.



TOP CLASSIC CARS LLC & TOP CLASSIC PARTS LLC



Connect the mirror wire connectors and push it up in the hole for the spring in the metal connector plate



TOP CLASSIC CARS LLC & TOP CLASSIC PARTS LLC



Then you push the back of the mirror up into the Domelight. And push the front up afterwards, you will need some force, try to push the right or left side in first and then the other side till it clicks



TOP CLASSIC CARS LLC & TOP CLASSIC PARTS LLC



Should look like this



TOP CLASSIC CARS LLC & TOP CLASSIC PARTS LLC



Done. Last step are the lenses, push them in like picture in here, one side first.



TOP CLASSIC CARS LLC & TOP CLASSIC PARTS LLC



Gratulation, you are done!



TOP CLASSIC CARS LLC &
TOP CLASSIC PARTS LLC



Thx for watching our HowTo!
Please visit our Parts Store at

[TOP CLASSIC PARTS LLC](#)

and our Dealership at

[TOP CLASSIC CARS LLC](#)

Klaus Hackbarth 1952 Commercial Dr Fort Myers, FL, 33901
Cell: 239 771 0057 Email: orders@top-classic-parts.com