

How to replace Mercedes Benz R129 Convertible AC Vent Levers

Purchase Includes:

- Vent Lever

Tools Needed:

- Hook
- Plastic Wedge
- Philips Screwdriver



Top Classic Parts LLC, 1952 Commercial Dr Fort Myers, FL, 33901
Cell: 239 771 0057 Email: order@top-classic-parts.com

TOP CLASSIC CARS LLC & TOP CLASSIC PARTS LLC



Please note that there are 2 ways of replacing the Vent Levers, the first few slides will show you the more difficult way by removing the whole Vent Cover. Further towards the end of this document (slide 11+) you will find an easier method which you might want to consider if you feel comfortable with your mechanical skills.

TOP CLASSIC CARS LLC & TOP CLASSIC PARTS LLC



Here you can see
the right Vent Lever
is broken off

TOP CLASSIC CARS LLC & TOP CLASSIC PARTS LLC



This is the installation area - The center Vents need to be removed.

The first step is to lift the bottom cover of the vent with a hook so the it comes off as shown in the picture

TOP CLASSIC CARS LLC & TOP CLASSIC PARTS LLC



Remove the cover with a plastic wedge as shown in the picture

©TOP CLASSIC PARTS LLC , Ft. Myers, FL, <https://benz.parts>

TOP CLASSIC CARS LLC & TOP CLASSIC PARTS LLC



Remove the
two screws

Open the
compartment
cover

©TOP CLASSIC PARTS LLC , Ft. Myers, FL, <https://benz.parts>

TOP CLASSIC CARS LLC & TOP CLASSIC PARTS LLC



IF THERE IS A TELEPHONE:

Use the hook to pull the phone from the compartment

Remove the cables from
the phone and put it aside



TOP CLASSIC CARS LLC & TOP CLASSIC PARTS LLC



One the telephone is pulled from the compartment box, there is a metal case that was holding the phone. Remove the 4 screws as shown in the picture and pull the case from the box.

©TOP CLASSIC PARTS LLC , Ft. Myers, FL, <https://benz.parts>

TOP CLASSIC CARS LLC & TOP CLASSIC PARTS LLC



Once the metal case is removed, there are two more screws as shown in the picture. Please remove in order to pull the compartment box from its position.

TOP CLASSIC CARS LLC & TOP CLASSIC PARTS LLC



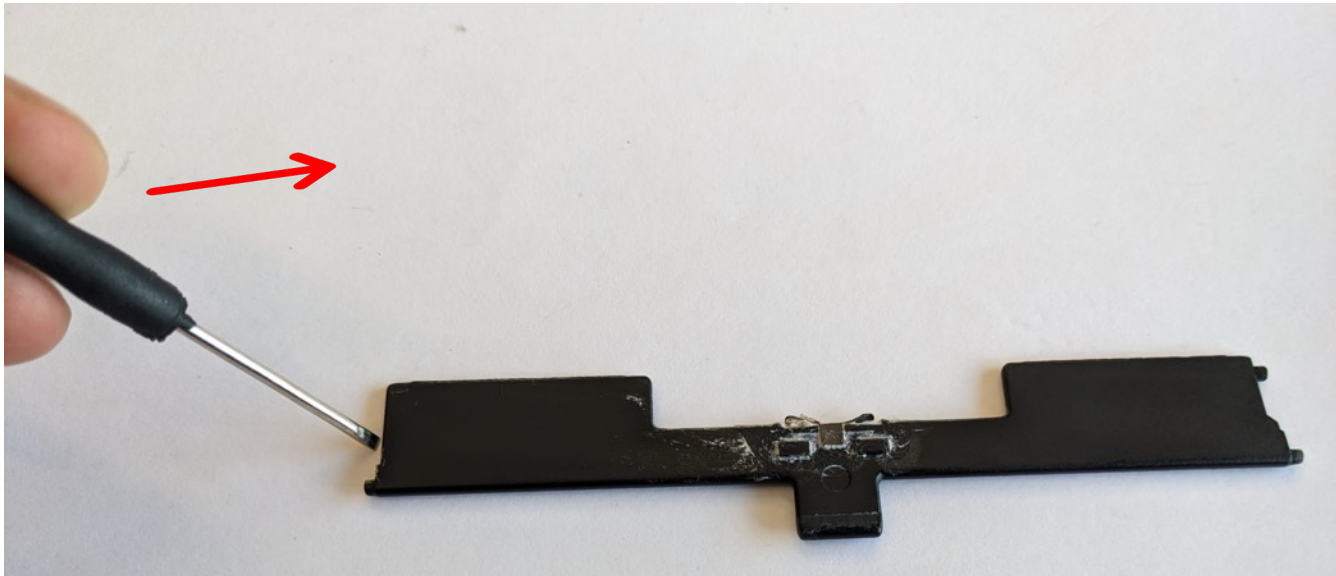
©TOP CLASSIC PARTS LLC , Ft/Myers, FL, <https://benz.parts>

TOP CLASSIC CARS LLC & TOP CLASSIC PARTS LLC



This is the quicker version of removing just the middle fin that holds the vent lever. Therefore you'll take a very small flat screwdriver and push it between the fin and the inner or middle side. Don't try it from the outer side!! Then you move the screwdriver to the right and that part should pop right out. For easier understanding check the next slide

TOP CLASSIC CARS LLC & TOP CLASSIC PARTS LLC



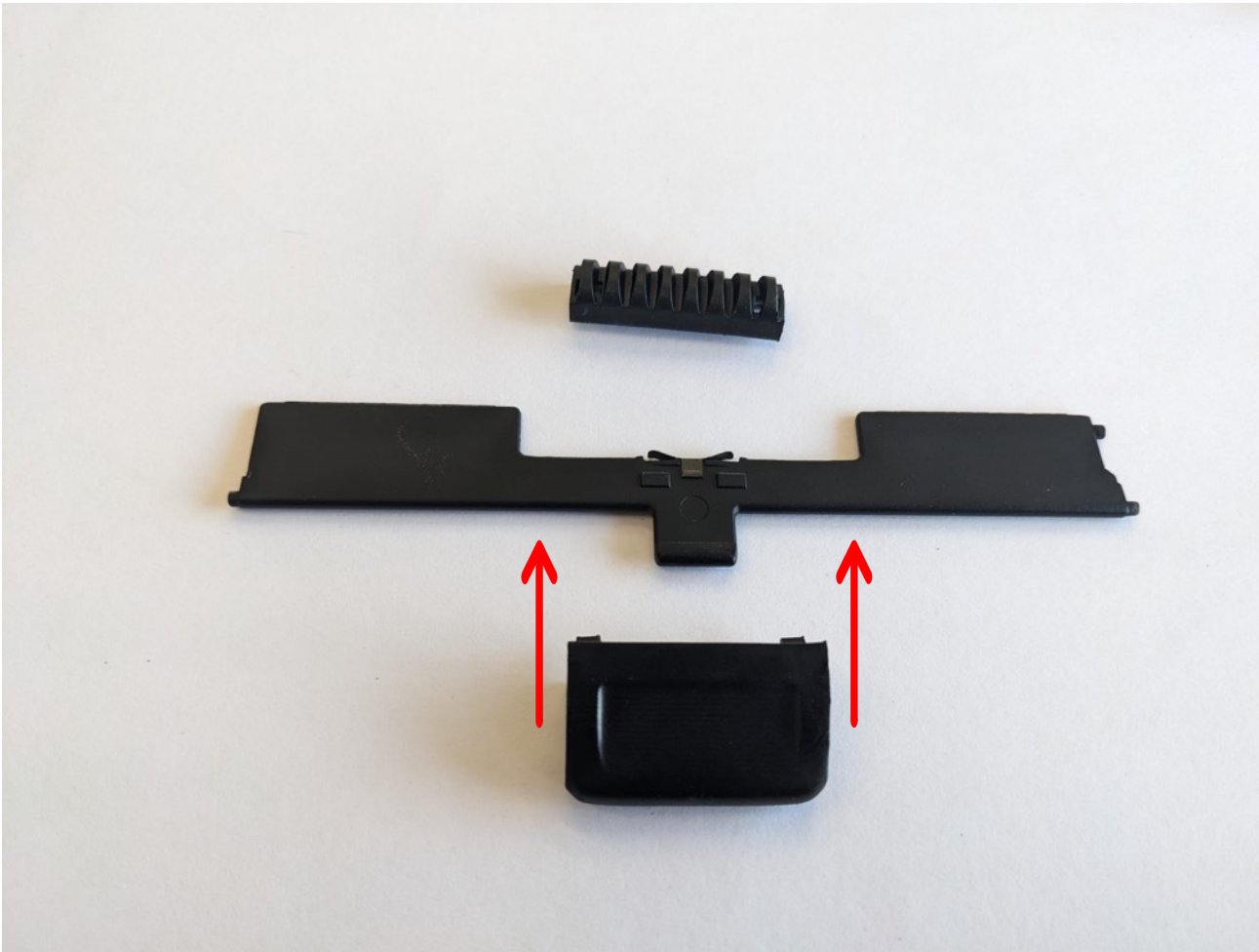
In the picture above you can see where you should place your screwdriver. Between the fin and the plastic. And then move the screwdriver in the direction of the arrow. As soon as the pin in the front of the fin pops out you can remove the whole fin. Pictured in the next slide

TOP CLASSIC CARS LLC & TOP CLASSIC PARTS LLC



Once the inner or middle side popped out, you will be able to easily pull it out of the outer side. Make sure all the fins are vertically and horizontally very straight.

TOP CLASSIC CARS LLC & TOP CLASSIC PARTS LLC

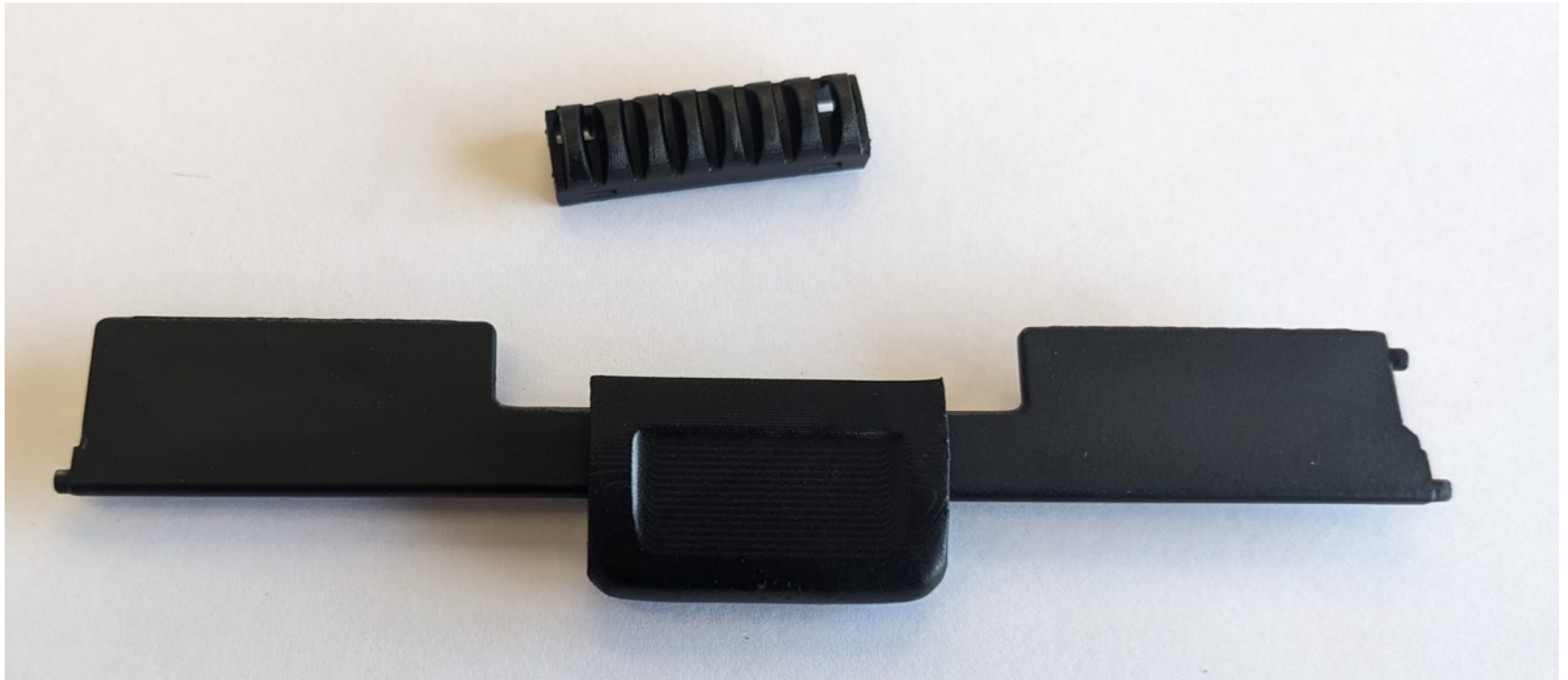


Now you
can start by
pushing the
new
purchased
lever onto
the fin

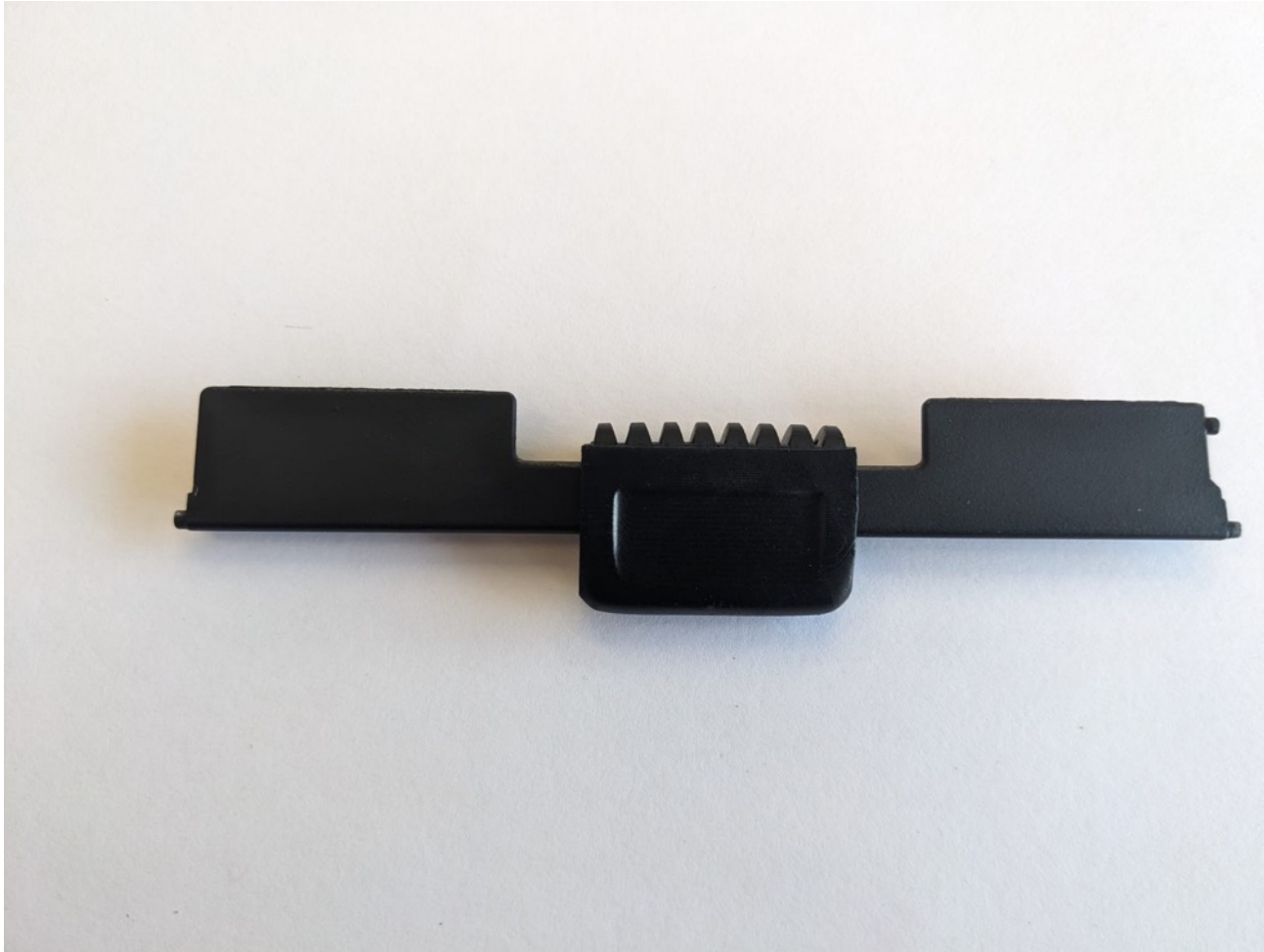
TOP CLASSIC CARS LLC & TOP CLASSIC PARTS LLC



Should look like this. Then you can attach the back side part to the lever, it should make a clicking sound.



TOP CLASSIC CARS LLC & TOP CLASSIC PARTS LLC



Once it clicked together make sure it moves from left to right. Before you install it back into the car, it must be positioned in the middle as pictured here.

TOP CLASSIC CARS LLC & TOP CLASSIC PARTS LLC



Back in the car. As a reminder, please make sure that all the fins are perfectly straight, the horizontal ones in the front as well as the vertical ones behind them. Also make sure that the lever is positioned in the middle of the fin. Then start by pushing in the right side first, make sure you hit both holes with the pins on the right side of the fin. They should be in a straight line behind each other. Then you can push in the left side of the fin

TOP CLASSIC CARS LLC & TOP CLASSIC PARTS LLC



That's it,
please
don't
hesitate to
contact us
with any
inquiries.

TOP CLASSIC CARS LLC &
TOP CLASSIC PARTS LLC



Thx for watching our HowTo!
Please visit our Parts Store at

[TOP CLASSIC PARTS LLC](#)

and our Dealership at

[TOP CLASSIC CARS LLC](#)

Top Classic Parts LLC, 1952 Commercial Dr Fort Myers, FL, 33901
Cell: +1 (239) 339-7018 | Email: order@top-classic-parts.com